



PARTS DRAWING



**240v 7.1kw
Spot Cooler**

**Product Code:
FSC25**



Serial Number Range:

From:

To:

Year Of Manufacture: 2023

***Please note, when ordering online via our website if the part number is not recognised, please Email spares@hscgroupuk.co.uk or Telephone 0115 946 1988**

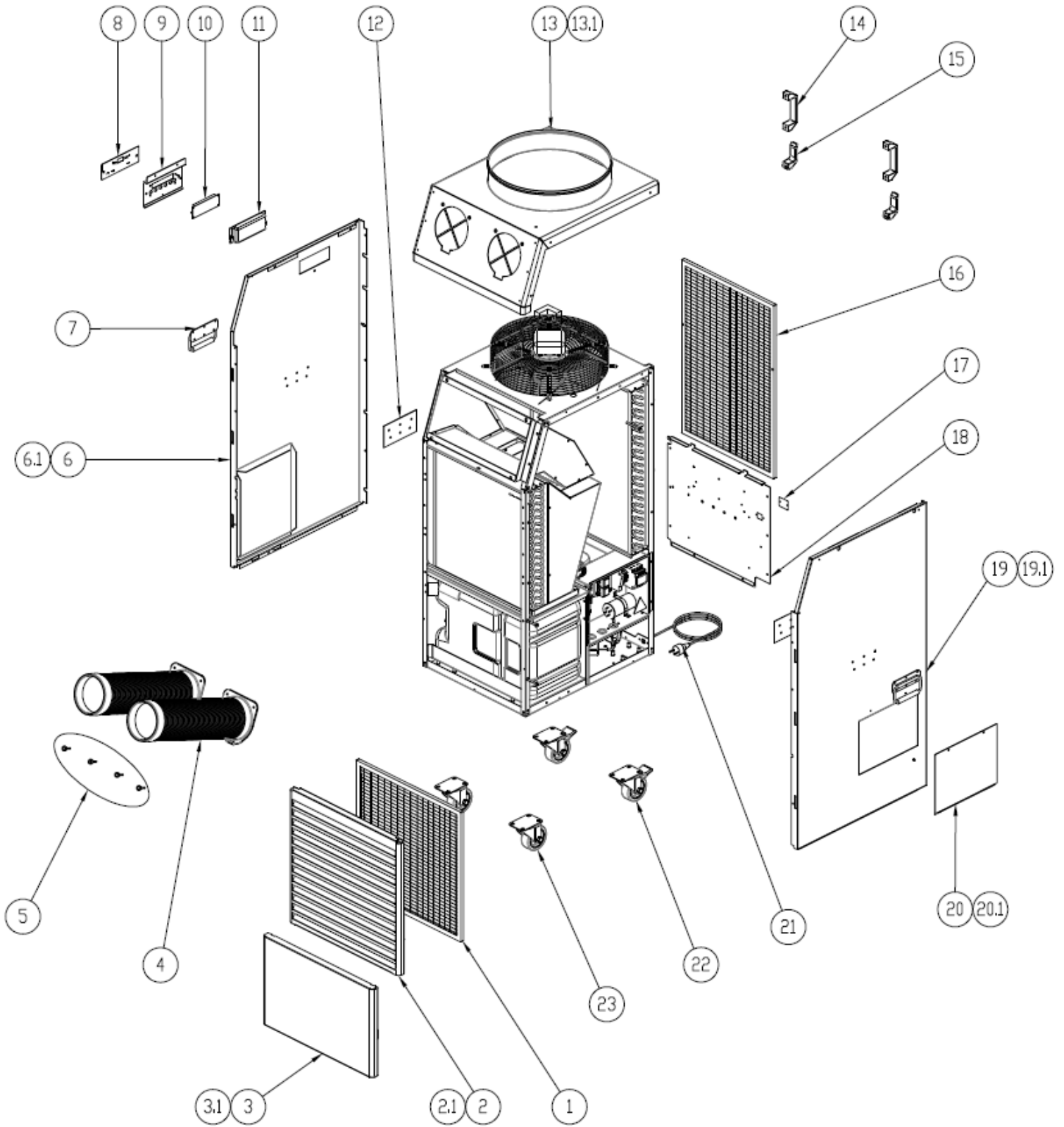
KEEP THIS BOOKLET FOR FUTURE REFERENCE

Nottingham: 0115 946 1988 • London: 0208 830 3333 ✉ Nottingham: sales@hscgroupuk.co.uk • London: sean@hscgroupuk.co.uk 🌐 www.hscgroupuk.co.uk

The Hire Supply Company Terms & Conditions Apply At All Time E&OE

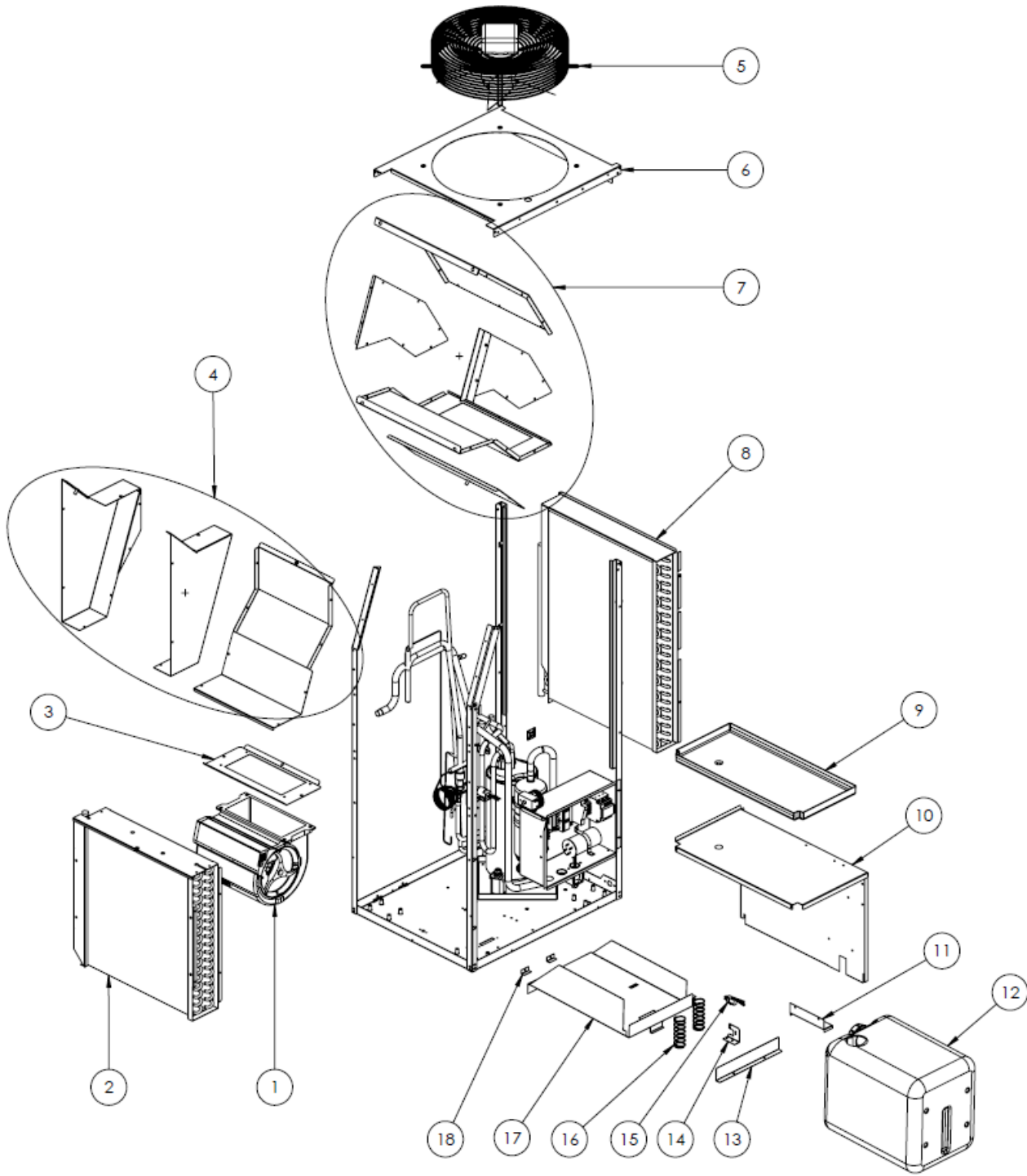
FSC25





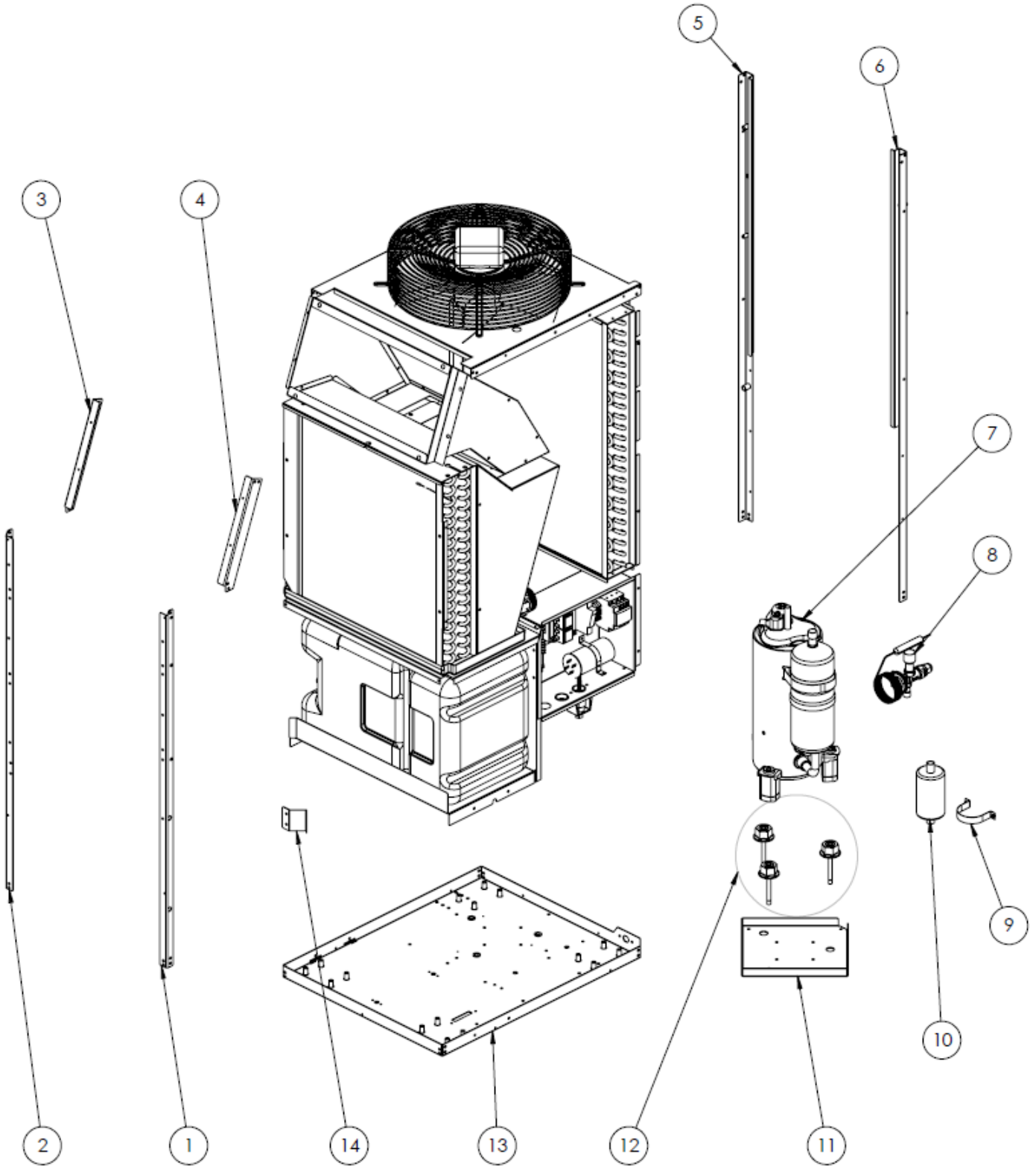
PART 1.

PART.1			
POSITION	DESCRIZIONE	DESCRIPTION	COD.ACS
1	Filtro evaporatore	Evaporator filter	ACS07.178
2	Griglia frontale RAL9006 BUCC. (GRIGIO)	Front grille RAL9006 TEXTURED (GREY)	ACS07.200
2.1	Griglia frontale RAL9010 BUCC. (BIANCO)	Front grille RAL9010 TEXTURED (BIANCO)	ACS07.788
3	Pannello frontale RAL9006 BUCC. (GRIGIO)	Front panel RAL9006 TEXTURED (GREY)	ACS07.202
3.1	Pannello frontale RAL9010 BUCC. (BIANCO)	Front panel RAL9010 TEXTURED (BIANCO)	ACS07.789
4	Tubo flessibile + Volantini	Air supply pipe + knobs	ACS07.646
5	Volantino 4PZ	Knob 4PZ	ACS07.717
6	Pannello lat. dx RAL9006 BUCC. (GRIGIO)	Panel lat. dx RAL9006 TEXTURED (GREY)	ACS07.645
6.1	Pannello lat. dx RAL9010 BUCC. (GRIGIO)	Panel lat. dx RAL9010 TEXTURED (BIANCO)	ACS07.790
7	Maniglia tipo "FISSAM"	"FISSAM" Type handle	ACS07.647
8	Etichetta pannello comandi	Control panel lable	ACS07.520
9	Pannello comandi	Control panel	ACS07.629
10	Display digitale	Digital display	ACS05.065
11	Protezione display	Display protection	ACS05.096
12	Piastra maniglia	Handle plate	ACS07.648
13	Assemblato cover RAL9005 BUCC. (NERO=	Assembled cover RAL9005 TEXTURED (NERO)	ACS07.643
13.1	Assemblato cover RAL9010 BUCC. (BIANCO)	Assembled cover RAL9010 TEXTURED (BIANCO)	ACS07.794
14	Maniglia jnure	Jnure handle	ACS01.157
15	Mezza maniglia	Half handle	ACS07.103
16	Filtro condensatore	Condenser filter	ACS07.085
17	Chiusura foro connettore RAL9005 BUCC. (NERO)	Closing connector hole RAL9005 TEXTURED (NERO)	ACS07.791
18	Pannello posteriore con RC RAL9005 BUCC. (NERO)	Rear panel with RC RAL9005 TEXTURED (NERO)	ACS07.796
19	Pannello lat. sx RAL9006 BUCC. (GRIGIO)	Lat. sx panel RAL9006 TEXTURED (GREY)	ACS07.644
19.1	Pannello lat. sx RAL9010 BUCC. (BIANCO)	Lat. sx panel RAL9010 TEXTURED (BIANCO)	ACS07.792
20	Sportello vano elettrico RAL9006 BUCC. (GRIGIO)	Electric compartment door RAL9006 TEXTURED (GREY)	ACS07.642
20.1	Sportello vano elettrico RAL9010 BUCC. (BIANCO)	Electric compartment door RAL9010 TEXTURED (BIANCO)	ACS07.793
21	Cavo L= 4Mt schuko	Cable L= 4Mt schuko	ACS01.173
22	Ruota girevole Ø80 con freno	Pivoting wheel Ø80 with brake	ACS07.649
23	Ruota girevole Ø80 senza freno	Pivoting wheel Ø80 without brake	ACS07.650



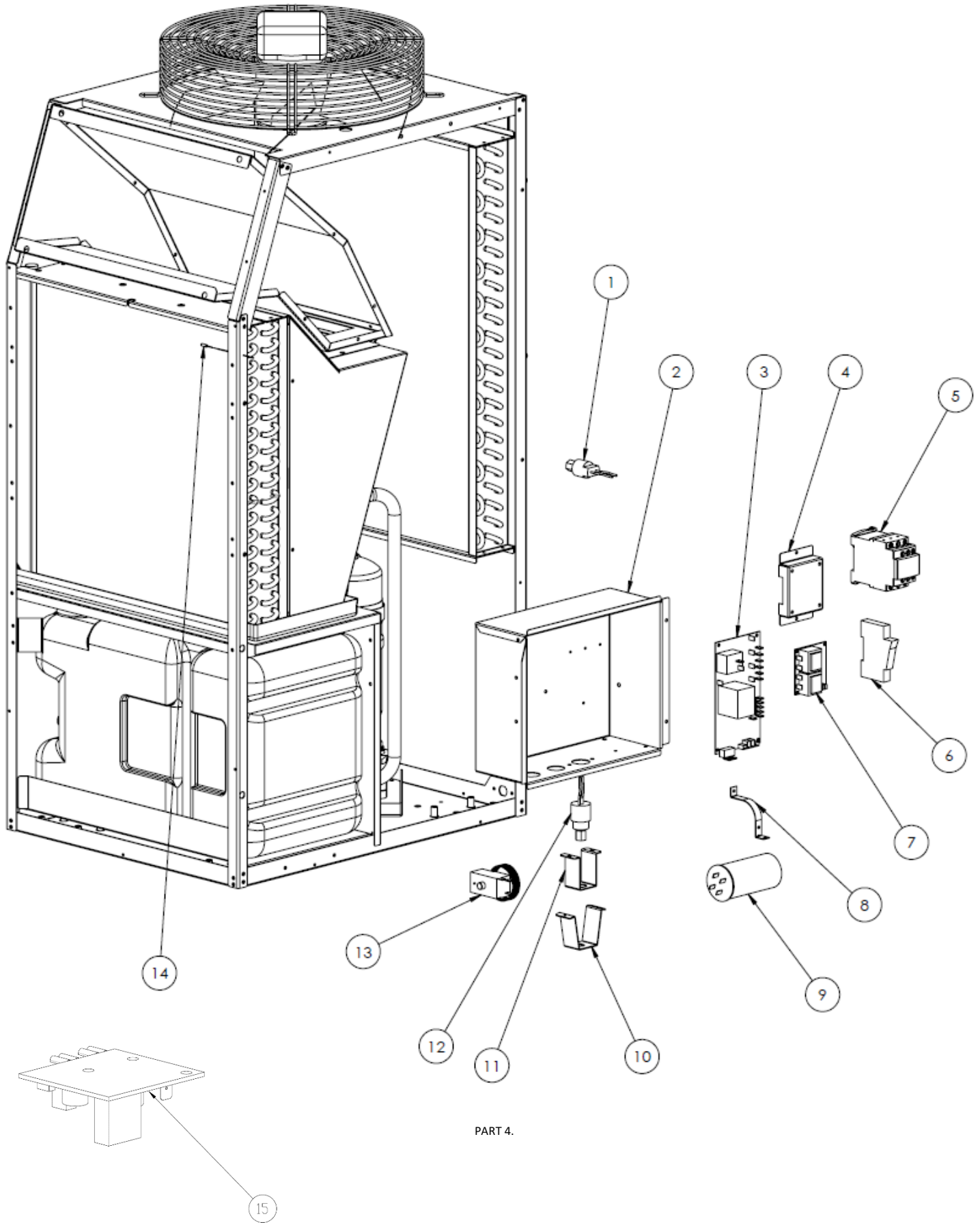
PART 2.

PART.2			
POSITION #	DESCRIZIONE	DESCRIPTION	COD.ACS
1	Ventilatore centrifugo	Centrifugal fan	ACS07.626
2	Evaporatore	Evaporator	ACS07.623
3	Coperchio convogliatore ventilatore centrifugo	Cover conveyor centrifugal fan	S/R
4	Plenum aspirazione centrifugo	Centrifugal suction plenum	S/R
5	Ventilatore	Fan	ACS07.053
6	Plenum ventilatore assiale	Axial fan plenum	S/R
7	Plenum mandata centrifugo	Centrifugal delivery plenum	S/R
8	Condensatore	Condenser	ACS07.624
9	Vaschetta evaporatore	Evaporator trav.	ACS07.373
10	Vano tanica	Tank vain	ACS07.392
11	Protezione micron	Micron protection	ACS07.388
12	Tanica 20L	20LTank	ACS07.625
13	Fine corsa tanica	Tank spacer	S/R
14	Supporto microinterruttore	Micro switch support	ACS07.393
15	Microswitch	microswitch	ACS03.007
16	Molla	Spring	ACS01.137
17	Suola tanica	Tank sole	ACS07.391
18	Blocco supporto tanica	Lock fitting for sole	ACS07.390



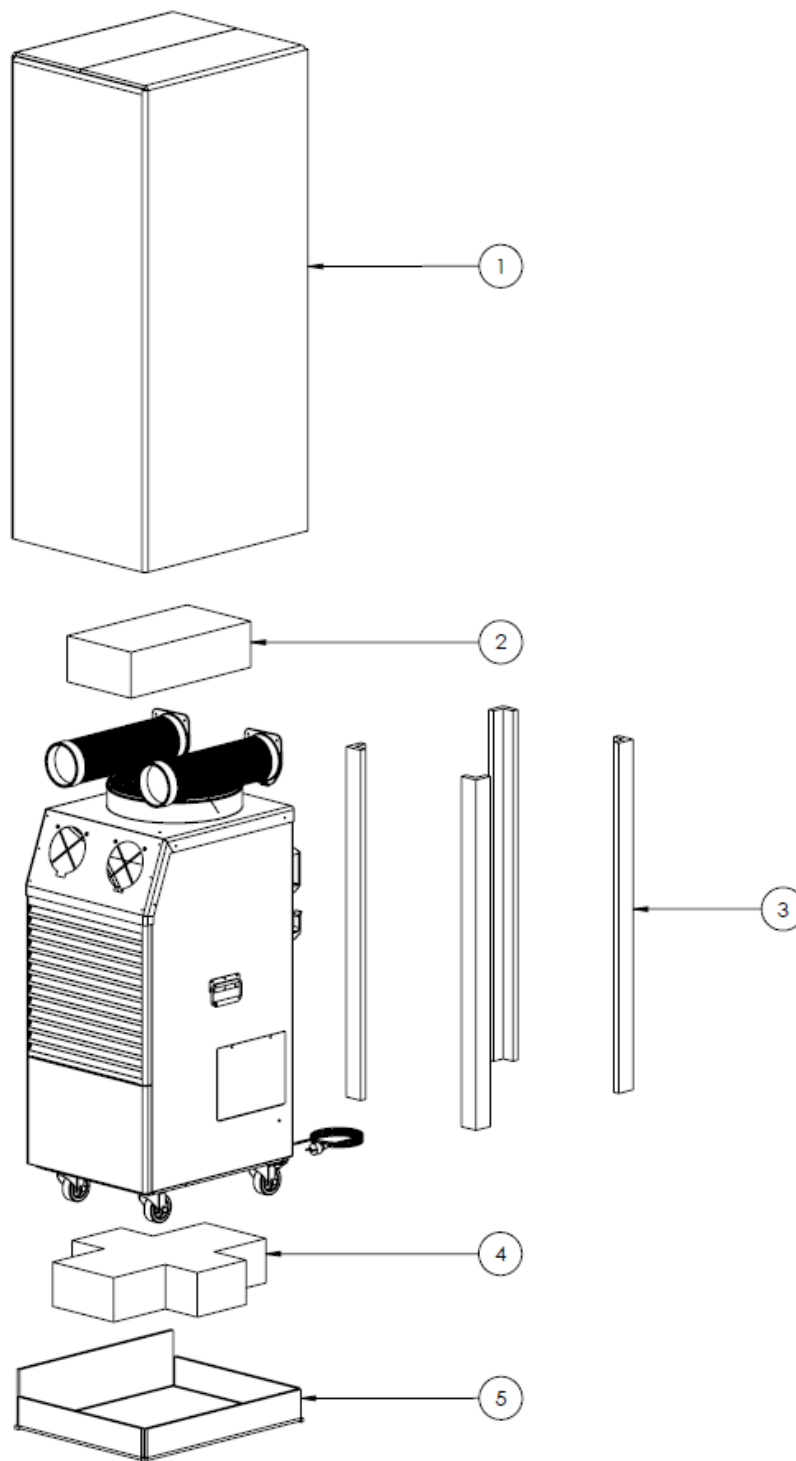
PART 3.

PART.3			
POSITION #	DESCRIZIONE	DESCRIPTION	COD.ACS
1	Montante frontale Sx	Left front upright	ACS07.368
2	Montante frontale Dx	Right front upright	ACS07.367
3	Giunzione montante frontale Dx	Front upright junction sup Dx	ACS07.371
4	Giunzione montante frontale Sx	Front upright junction sup Sx	ACS07.372
5	Montante posteriore Dx	Back rear upright	S/R
6	Montante posteriore Sx	Back upright left	S/R
7	Kit compressore	Kit compressor	S/R
8	Valvola termostatica	Thermostatic valve	ACS07.627
9	Fascia filtro deidratatore	Dryer filter band	S/R
10	Filtro ads	Ads filter	ACS02.013
11	Rinforzo fondo compressore	Bottom reinforced	S/R
12	Kit Perno fissaggio compressore	Kit Compressor fixing pin	S/R
13	Fondo	Bottom	S/R
14	Distanziale tanica	Tank spacer	S/R



PART 4.

PART.4			
POSITION #	DESCRIZIONE	DESCRIPTION	COD.ACS
1	Pressostato di bassa	Low pressure	ACS07.639
2	Vano elettrico	Electric vane	ACS07.631
3	Scheda elettronica	Electronic board	ACS07.634
4	Supporto PCB fan	Support PCB fan	ACS07.632
5	Contattore 7.5 kw	Contactator 7.5 kw	ACS07.006
6	Portafusibili sezionatore	Fuse holder disconnecter	ACS07.387
7	PCB DIGIT fan	PCB DIGIT fan	ACS07.633
8	Fascia condensatore	Capacitor belt	ACS01.305
9	Condensatore 55µF	Capacitor 55µF	ACS07.359
10	Supporto superiore	Upper support	ACS07.308
11	Supporto inferiore	Lower support	
12	Pressostato di alta a riarmo manuale	Manual reset high pressure switch	ACS07.785
13	Termostato	Thermostat	ACS07.637
14	Sonda di temperatura	Temperature probe	ACS05.147
15	Scheda elettronica SEP02	Electronic board SEP02	ACS12.223



PART 5.

PART.5			
POSITION #	DESCRIZIONE	DESCRIPTION	COD.ACS
1	Scatola imballo macchina	Packaging box machine	S/R
2	Divisorio tubi flessibili	Divider flexible pipe	S/R
3	Imballo angolari PSE	Corner packs	S/R
4	Imballo fondo PSE	Bottom packing PSE	S/R
5	Tramezza imballo	Partition packing	S/R



Recycling



ENVIRONMENTAL PROTECTION: Please recycle any unwanted materials as opposed to disposing them as general waste. It is recommended the original is retained and used to store the product when not in use for prolonged periods of time. If this is not applicable ensure the materials are sorted and recycled in accordance with local regulations.



SPECIFICATION CHANGE: It is our policy to continually improve products to ensure these meet the rigours of the industry we serve. Therefore, as such we reserve the right to alter specifications, data, components & parts with-out prior notice.

WARRANTY: Please refer to the manufactures terms & conditions.

IMPORTANT: No liability will be accepted for the incorrect use of this product.

KEEP THIS BOOKLET FOR FUTURE REFERENCE

📞 Nottingham: 0115 946 1988 • London: 0208 830 3333 ✉ Nottingham: sales@hscgroupuk.co.uk • London: sean@hscgroupuk.co.uk 🌐 www.hscgroupuk.co.uk

The Hire Supply Company Terms & Conditions Apply At All Time E&OE