



# PARTS DRAWING

## EXIN LIGHT

Rechargeable Led  
Battery Light

Product Code:  
IN120L



Serial Number Range:

From:

To:

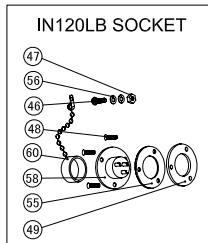
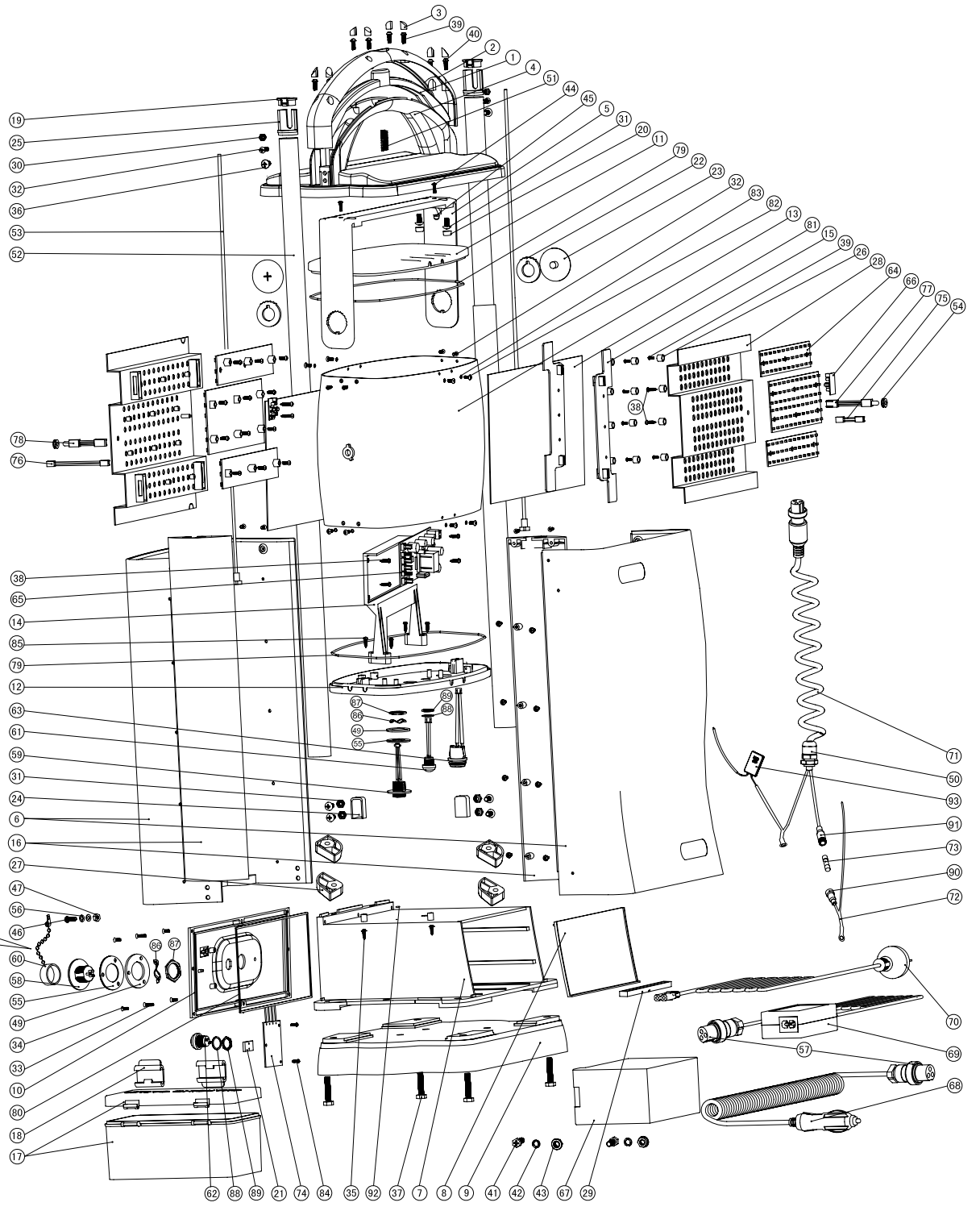
Year Of Manufacture:

**\*Please note, when ordering online via our website if the part number is not recognised, please Email [spares@hscgroupuk.co.uk](mailto:spares@hscgroupuk.co.uk) or Telephone 0115 946 1988**

**KEEP THIS BOOKLET FOR FUTURE REFERENCE**

Nottingham: 0115 946 1988 • London: 0208 830 3333 ✉ Nottingham: [sales@hscgroupuk.co.uk](mailto:sales@hscgroupuk.co.uk) • London: [sean@hscgroupuk.co.uk](mailto:sean@hscgroupuk.co.uk) 🌐 [www.hscgroupuk.co.uk](http://www.hscgroupuk.co.uk)

The Hire Supply Company Terms & Conditions Apply At All Time E&OE



Item No	Part Number	Description	Item No	Part Number	Description
1	SL/1	Handle Button	43	S/R	M5 Flange Nuts
2	SL/2NEW	Upper Handle Cover Black	44	S/R	M4 x 28 Screw
3	SL/3	Rubber Upper Handle Bung Set - Pkt 8	45	S/R	M4 Nut Fixed
4	SL/4NEW	Down Cover Of Handle	46	SL/46	M3 x 10 Screw
5	SL/5	Yellow U Bracket	47	S/R	M3 Nut
6	SL/6	Body (Front & Back)	48	SL/48	Ø 3 x 14 Screw
7	SL/7	Battery Case	49	SL/49	Socket Fixed Iron
8	S/R	Waterproof Cover For Battery	50	S/R	Cable Gland PG9
9	SL/9	Base	51	SL/51	Handle Spring
10	SL/10	Cover For Battery	52	SL/52P	3 Extension Pole c/w Ejector Rod - Pair
11	SL/11	Top Cover	53	SL/53	Ejector Rod
12	SL/12	Bottom Of Lense	54	S/R	LED Sleeve
13	SL/13	Clear Lense	55	SL/55	Socket Waterproof Cushion
14	SL/14	Bracket For Mainboard	56	SL/56	Ø 3 Chains Fixed Waterproof Cushion
15	SL/15	Bracket For Mainboard	57	SL/57	Plug New Style
16	SL/16	Cover For Extension (Left & Right)	58	SL/59	Charge Socket
17	SL/17	Charger Box With Lid	58	SL/59B	Charge Socket Assembly
18	SL/18	Charger Box Clip	59	S/R	Socket
19	SL/19	Cap For Top Extension	60	SL/60	Charge Socket Cover - Metal - NLA
20	SL/20	Screw Cover	60	SL/61	Charge Socket Cover - Plastic
21	SL/21	Battery Level Indicator Cover	61	SL/62.1	Function Switch
22	SL/22	Rotary Screw Sheet	62	SL/62.2	Battery Test Switch
23	SL/23	Fixed Screw Sheet	63	SL/63	On - Off Switch
24	SL/24	Extension Screw Cover	63	SL/63NEW	On - Off Switch Inc Light Base Plate
25	SL/25	Bar For 3 Extension	64	SL/64	36 Led Mainboard
26	SL/26	Gasket For LED Board	65	SL/65IN1600	Main PC Board - Also Requires SL/62.1
27	SL/27	Plastic Base Angle Nut - Pkt 4	66	SL/66	Ballast
28	SL/28	LED Reflector	67	SLB10A	10amp Battery
29	S/R	Anti Collision Reinforcement	67	SLB17A	18amp Battery
30	SL/30	M4 Nyloc Nut	68	SLCCNEW	Car Charger
31	S/R	M5 Nut	69	SLMCNEWIP	Mains Charger & Kettle Lead
32	SL/32	M4 x 14 Screw	70	SL/70	Mains Power Kettle Lead Only
33	SL/33	M3 x 14 Screw	71	SL/71	LED Cable Assembly - Battery To Light Head
34	SL/34	M3 x 8 Screw	72	SL/72	Plastic Fuse Cap
35	SL/35	Ø 3 x 10 Pan Head Screw	73	SL/73	5amp Fuse
36	SL/36	M5 x 10 Screw	74	SL/74	Power Test PC Board
37	SL/37	M6 x 30 Screw	75	SL/75	Wire Connector - Ballast To Mainboard 10cm
38	SL/38	Ø 3 x 10 Screw	76	SL/76	Wire Connector - Ballast To Mainboard 24cm
39	SL/39	Ø 3 x 6 Upper Cover Screw	77	SL/77	Led Indicator - Light Head 15cm
40	S/R	Ø 3 x 8 Screw	78	SL/78	Led Indicator - Light Head 25cm
41	S/R	M5 x 12 Screw	79	S/R	Seal - Clear Lense
42	S/R	Ø 5 Pads	80	S/R	Seal - Battery Box

Item No	Part Number	Description
---------	-------------	-------------

81	S/R	Protective Film
82	SL/82	M3 x 6 Screw
83	S/R	Ø 3 Red MianDian
84	S/R	Ø 3 x 6 Screw
85	S/R	Ø 3 x 8 Screw
86	S/R	Ø 16 Wavy Washer
87	S/R	M16 Fixed Nut
88	SL/88	Ø 13mm O Ring
89	SL/89	M12 Fixed Nut
90	S/R	Fuse Plastic Cap (Male)
91	S/R	Fuse Plastic Cap (Female)
92	S/R	Breathable Film
93	SL/91	Self Recovery Fuse



## Recycling



**ENVIRONMENTAL PROTECTION:** Please recycle any unwanted materials as opposed to disposing them as general waste. It is recommended the original is retained and used to store the product when not in use for prolonged periods of time. If this is not applicable ensure the materials are sorted and recycled in accordance with local regulations.



**SPECIFICATION CHANGE:** It is our policy to continually improve products to ensure these meet the rigours of the industry we serve. Therefore, as such we reserve the right to alter specifications, data, components & parts with-out prior notice.

**WARRANTY:** Please refer to the manufactures terms & conditions.

**IMPORTANT:** No liability will be accepted for the incorrect use of this product.

### KEEP THIS BOOKLET FOR FUTURE REFERENCE

📞 Nottingham: 0115 946 1988 • London: 0208 830 3333    ✉ Nottingham: [sales@hscgroupuk.co.uk](mailto:sales@hscgroupuk.co.uk) • London: [sean@hscgroupuk.co.uk](mailto:sean@hscgroupuk.co.uk)    🌐 [www.hscgroupuk.co.uk](http://www.hscgroupuk.co.uk)

The Hire Supply Company Terms & Conditions Apply At All Time E&OE