



# PARTS DRAWING



**Petrol 2" Centrifugal  
Water Pump**

**Product Code:  
LWP50ZB**



Serial Number Range:

From:

To:

Year Of Manufacture:

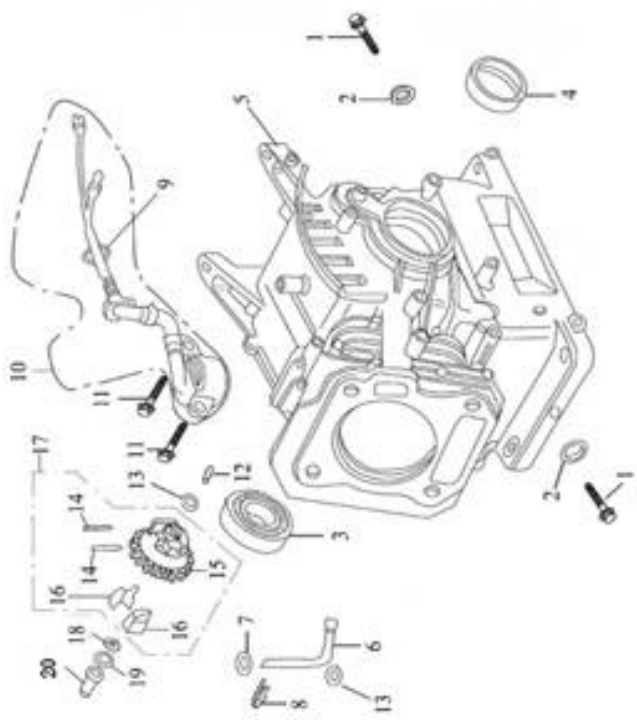
**\*Please note, when ordering online via our website if the part number is not recognised,  
please Email [spares@hscgroupuk.co.uk](mailto:spares@hscgroupuk.co.uk) or Telephone 0115 946 1988**

**KEEP THIS BOOKLET FOR FUTURE REFERENCE**

Nottingham: 0115 946 1988 • London: 0208 830 3333 ✉ Nottingham: [sales@hscgroupuk.co.uk](mailto:sales@hscgroupuk.co.uk) • London: [sean@hscgroupuk.co.uk](mailto:sean@hscgroupuk.co.uk) 🌐 [www.hscgroupuk.co.uk](http://www.hscgroupuk.co.uk)

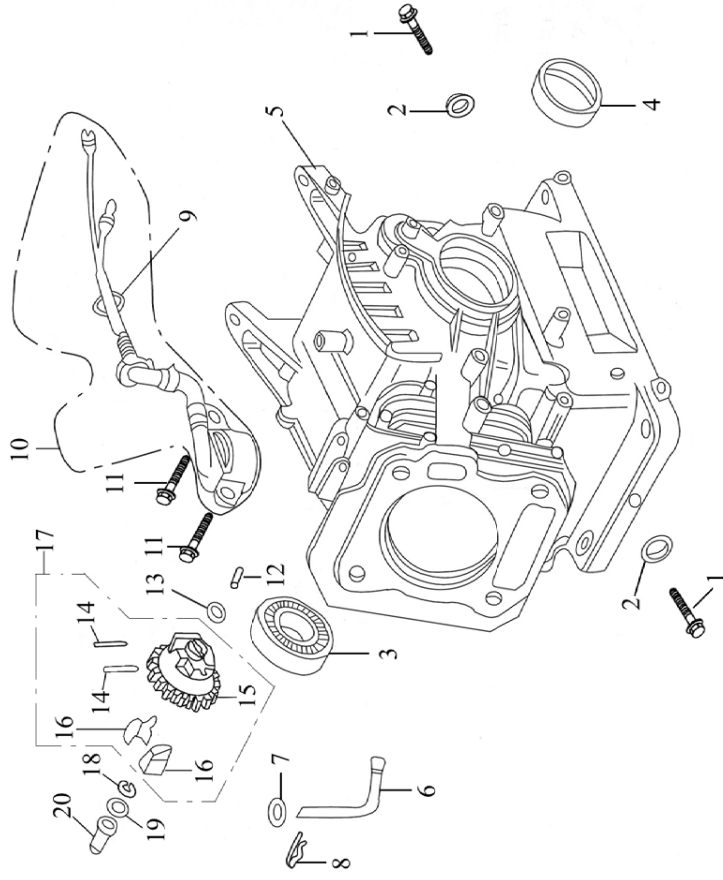
The Hire Supply Company Terms & Conditions Apply At All Time E&OE

# E-1 CRANKCASE ASSY



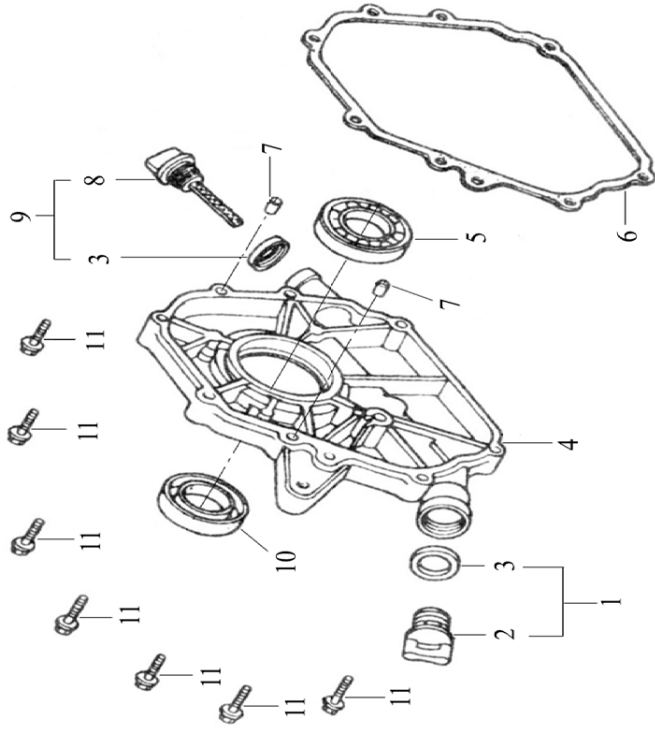
P/N	Part No.	Description	Quantity	Remark
1	11115	Drain Plug	2	
2	11116	Drain plug washer	2	
3	GB279-89	Bearing 6205	1	
4	11120	Oil seal, crankshaft	1	
5	11100	Crankcase	1	
6	26111	Regulating sway bar	1	
7	26113	Washer	1	
8	26112	Split Pin	1	
9	GB/T6177	Nut M10	1	
10	27400	Oil sensor	1	
11	GB/T 16674.2	Bolt M6 x 14	2	
12	25115	Regulating Shaft	1	
13	25118	Washer, driven gear	2	
14	25116	Pin	2	

# E-1 CRANKCASE ASSY



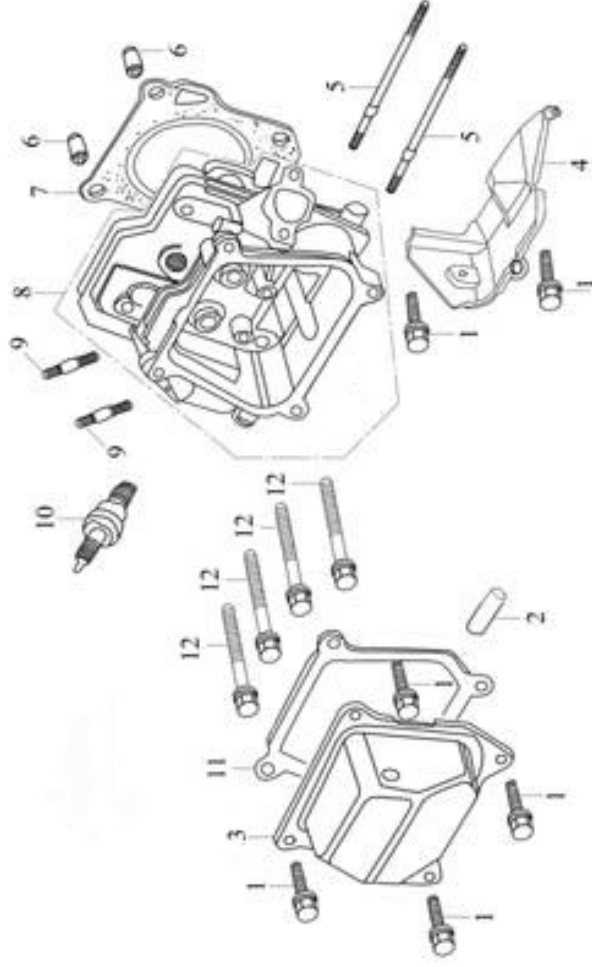
P/N	Part No.	Description	Quantity	Remark
15	25111	Driven gear, governor	1	
16	25114	Fly weight, governor	2	
17	25100	Driven gear sub-assy, governor	1	
18	25117	Snap ring	1	
19	25113	Washer	1	
20	25112	Sliding sleeve	1	

# E-2 CRANKCASE COVER ASSY



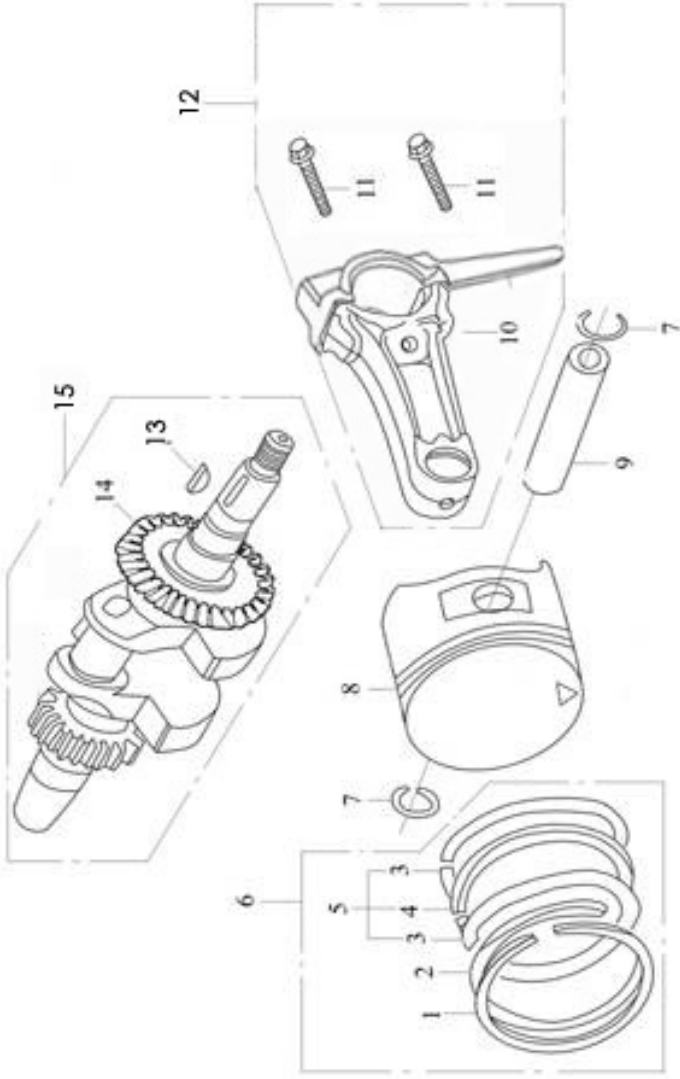
P/N	Part No.		Description	Quantity	Remark
1	15610	S/R	Oil plug with Seal	1	
2	15611	S/R	Oil plug	1	
3	15512	S/R	Seal	2	
4	11211	S/R	Crankcase cover	1	
5	GB/T276	S/R	Bearing 6205	1	
6	11114	S/R	Gasket, crankcase	1	
7	11113	S/R	Set pin $\phi 8 \times 14$	2	
8	15511	S/R	Dipstick	1	
9	15510	S/R	Dipstick with seal	1	
10	11120	S/R	Oil seal, crankshaft	1	
11	GB/T16674	S/R	Bolt $M8 \times 32$	7	

# E-3 CYLINDER HEAD & CYLINDER HEAD COVER ASSY



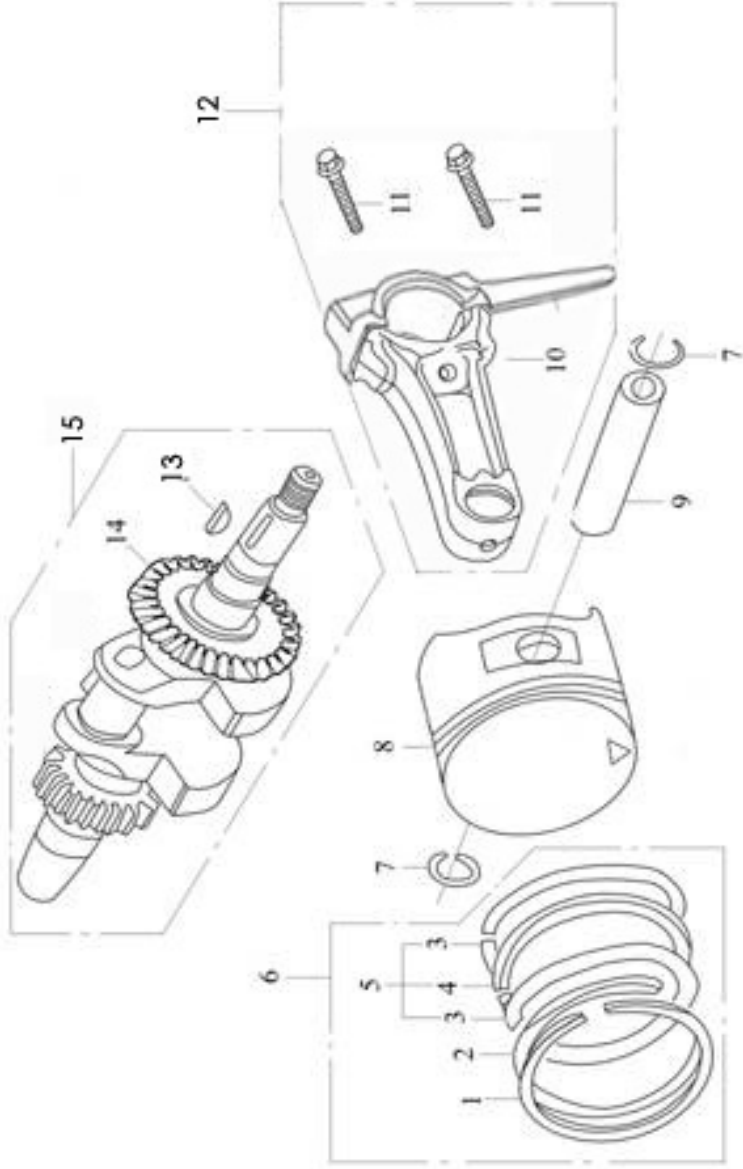
P/N	Part No.	Description	Quantity	Remark
1	GB/T16674.2	Bolt M6 x 12	1	
2	17217	Air Duct	1	
3	12200	Cylinder head cover Assy	1	
4	19121	Cylinder head cover	1	
5	17218	Lead wind cover	2	
6	12117	Stud M6 x 109	2	
7	12120	Set pin 10 x 16	1	
8	12100	Gasket, cylinder head	1	
9	18214	Cylinder head Assy	1	
10	27100	Stud M8 x 34	2	
11	12212	Spark plug F6TC	1	
12	12118	Gasket, cylinder head cover	1	
		Bolt	4	

# E-4 CRANKSHAFT, PISTON & CONNECTING ROD



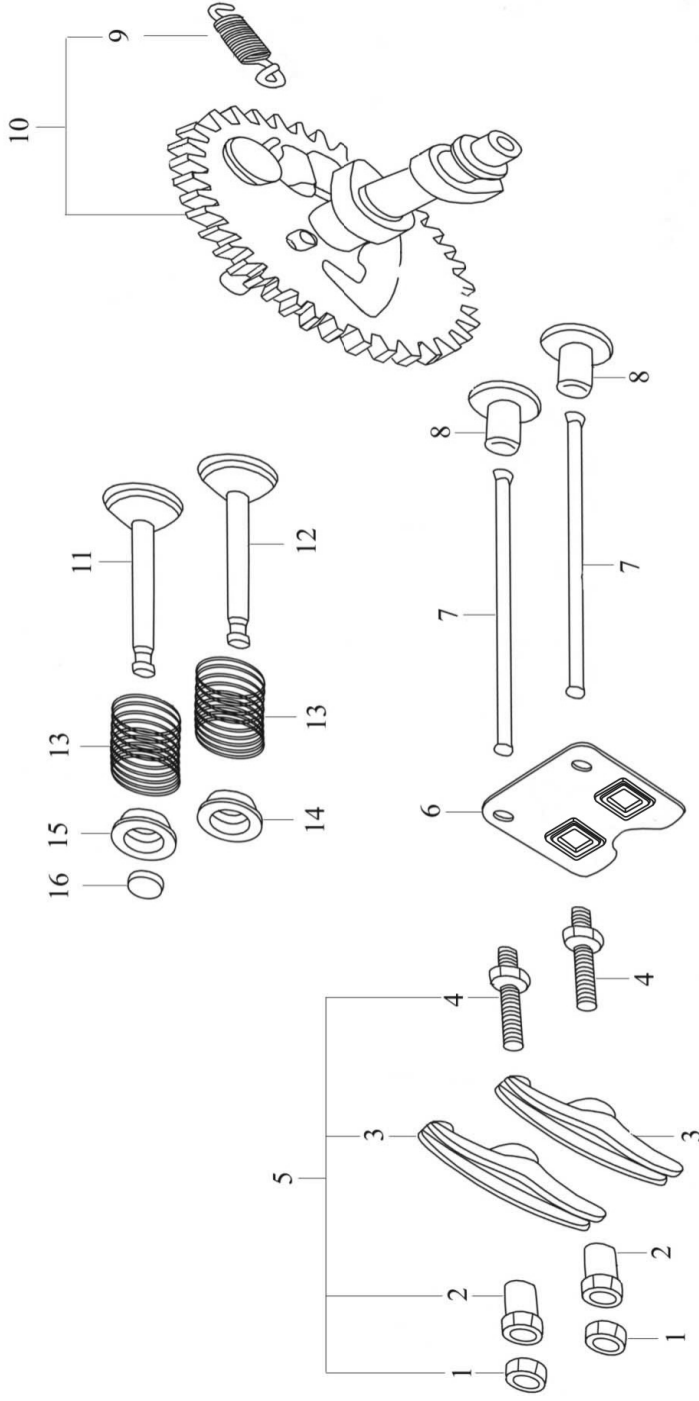
P/N	Part No.		Description	Quantity	Remark
1	13411	S/R	Piston ring (1)	1	
2	13412	S/R	Piston ring (2)	1	
3	13422	S/R	Side rail	2	
4	13421	S/R	Expander	1	
5	13420	S/R	Scraper ring set	1	
6	13400	S/R	Piston ring assy	1	
7	13313	S/R	Piston pin circlip	2	
8	13311	S/R	Piston	1	
9	13312	S/R	Piston pin	1	
10	13121	S/R	Shank	1	
11	13123	S/R	Bolt	2	

# E-4 CRANKSHAFT, PISTON & CONNECTING ROD



P/N	Part No.		Description	Quantity	Remark
12	13100	S/R	Connecting rod assy	1	
13	13112	S/R	Woodruff key	1	
14	13111	S/R	Crankshaft	1	
15	13100	S/R	Crankshaft assy	1	

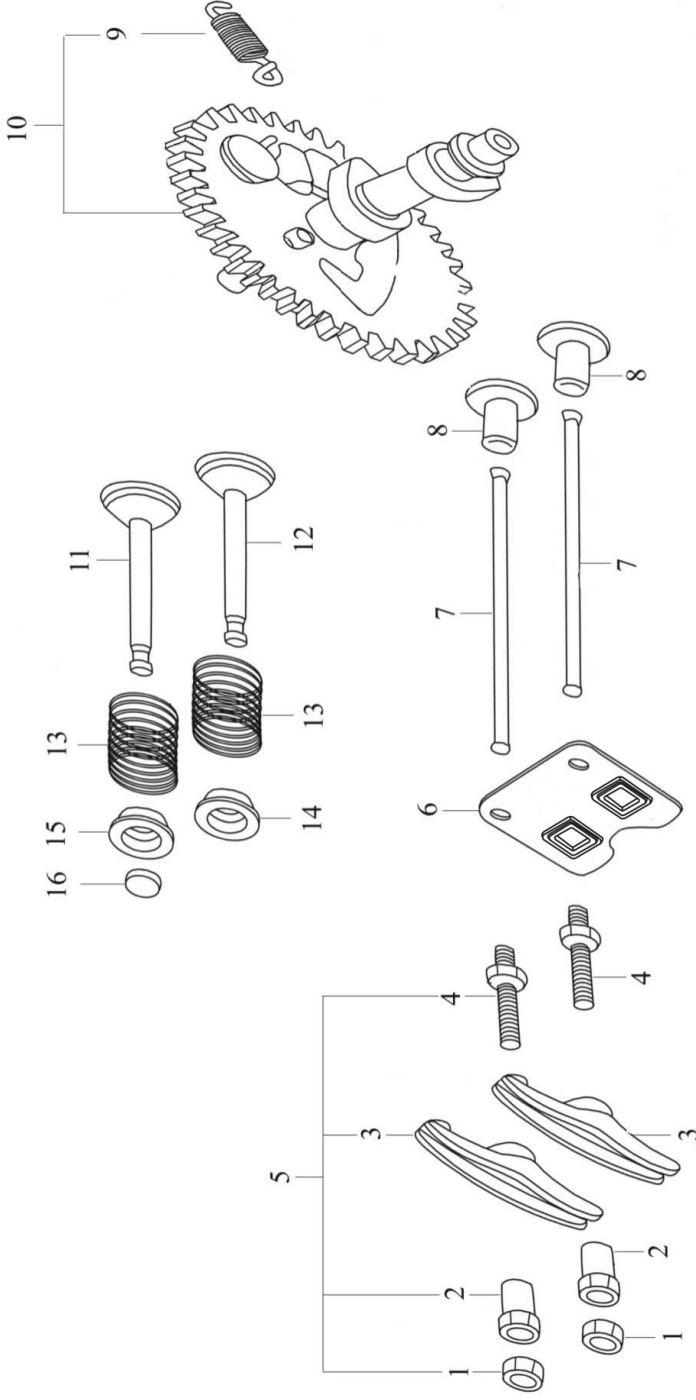
# E-5 COMBINATION OF CAM SHAFT & VALVE ROCKER



P/N	Part No.	Description	Quantity	Remark
1	14314	Lock nut	2	
2	14312	Sleeve	2	
3	14311	Valve rocker	2	
4	14313	Adjusting bolt for valve gap	2	
5	14310	Valve rocker assy	2	
6	14221	Pusher guide	1	
7	14210	Pusher	2	
8	14315	Tappet	2	
9	14122	Extension spring	1	
10	14100	Camshaft assy	1	
11	14412	Exhaust valve	1	
12	14411	Intake valve	1	

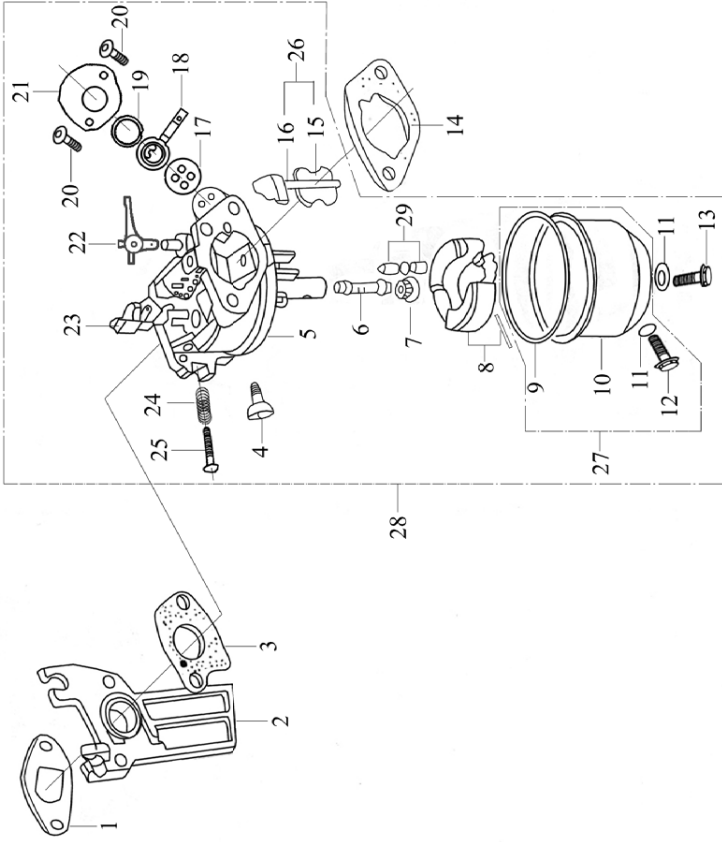


# E-5 COMBINATION OF CAM SHAFT & VALVE ROCKER



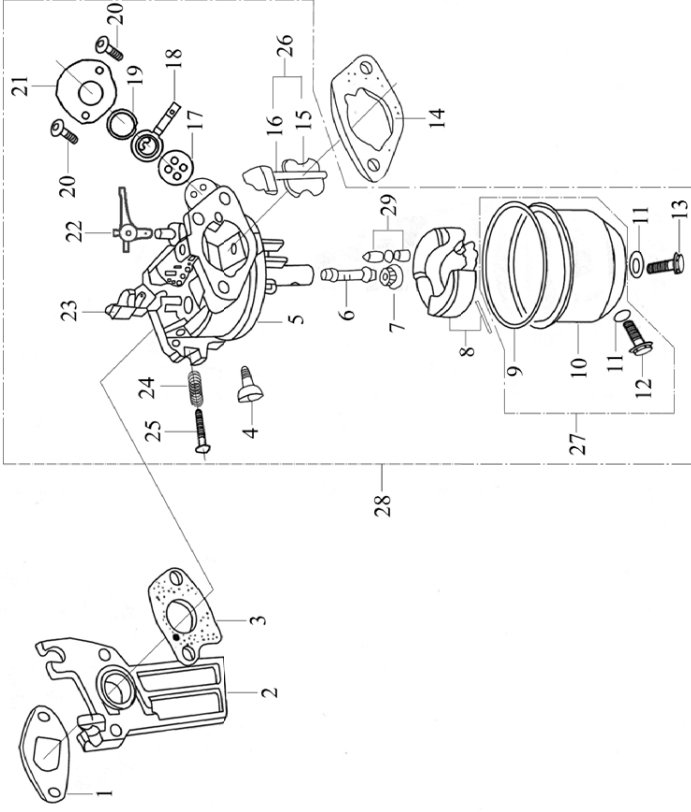
P/N	Part No.	Description	Quantity	Remark
13	14414	S/R	2	
14	14413	S/R	1	
15	14415	S/R	1	
16	14416	S/R	1	

# E-6 CARBURETOR ASSY



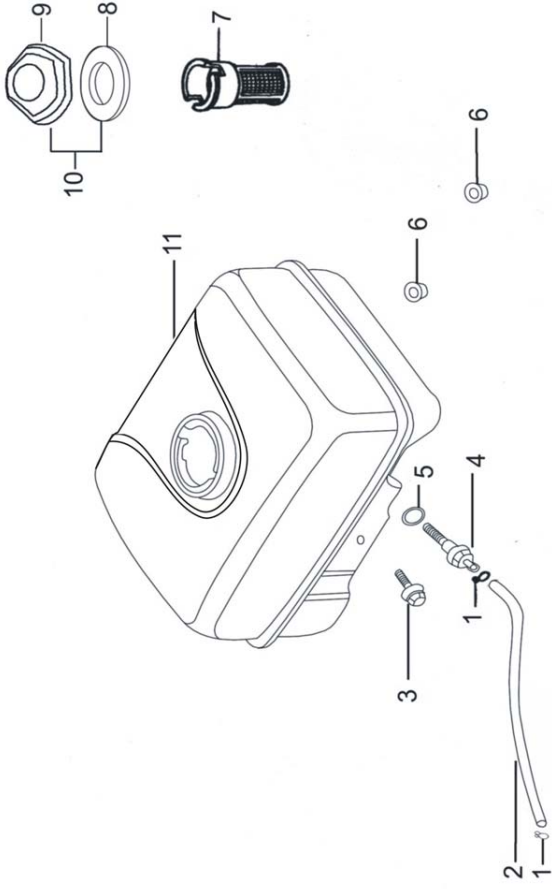
P/N	Part No.	Description	Quantity	Remark
1	17219/168F	Gasket, intake port	1	
2	16122/168F	Connecting block	1	
3	16113/168F	Gasket, carburetor	1	
4	16351/168F	Idle adjusting screw	1	
5	16240/168F	Mixture chamber body	1	
6	16244/168F	Main nozzle	1	
7	16243/168F	Main jet	1	
8	16220/168F	Float	1	
9	16216/168F	Gasket, float chamber	1	
10	16211/168F	Float chamber	1	
11	16215/168F	Washer, drain screw	2	
12	16214/168F	Drain screw, float chamber	1	
13	16212/168F	Screw	1	
14	17113/168F	Gasket, air cleaner	1	

# E-6 CARBURETOR ASSY



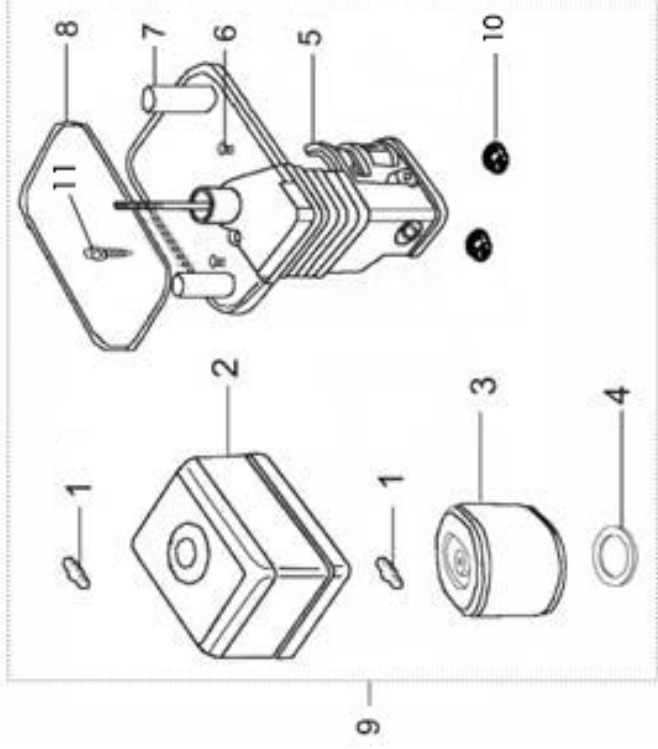
P/N	Part No.	Description	Quantity	Remark
15	16321	Choke	1	
16	16322	Choke stem	1	
17	16364	Airproof washer	1	
18	16363	Throttle lever	1	
19	16364	Washer	1	
20	16367	Screw M4	2	
21	16262	Cover	1	
22	16114	Choke switch	1	
23	16250	Throttle unit	1	
24	16332	Spring, mixture adjustment screw	1	
25	16331	Mixture adjustment screw	1	
26	16320	Choke unit	1	
27	16210	Float chamber	1	
28	LWP16100/50ZB	Carburetor Assy	1	
29	16230	Float needle	1	

# E-7 FUEL TANK ASSY



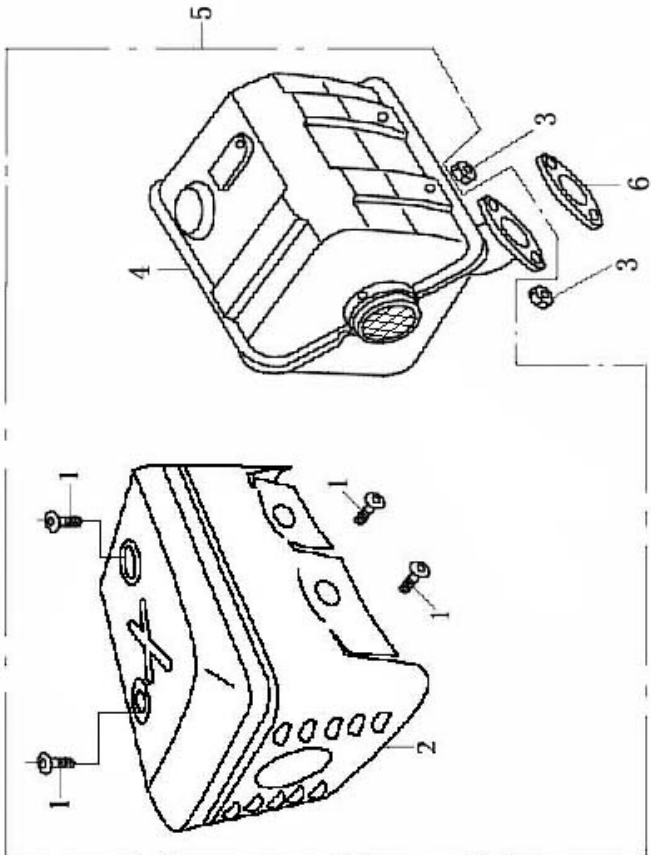
P/N	Part No.	Description	Quantity	Remark
1	16622	S/R	2	
2	16621	S/R	1	
3	GB/T16674	S/R	1	
4	16630	S/R	1	
5	16634	S/R	1	
6	GB6187	S/R	2	
7	16610	S/R	1	
8	16414	S/R	1	
9	16411	S/R	1	
10	LWP16400/50ZB	Fuel filler cap with packing ring	1	
11	LWP16500/50ZB	Fuel tank	1	

# E-8 AIR CLEANER ASSY



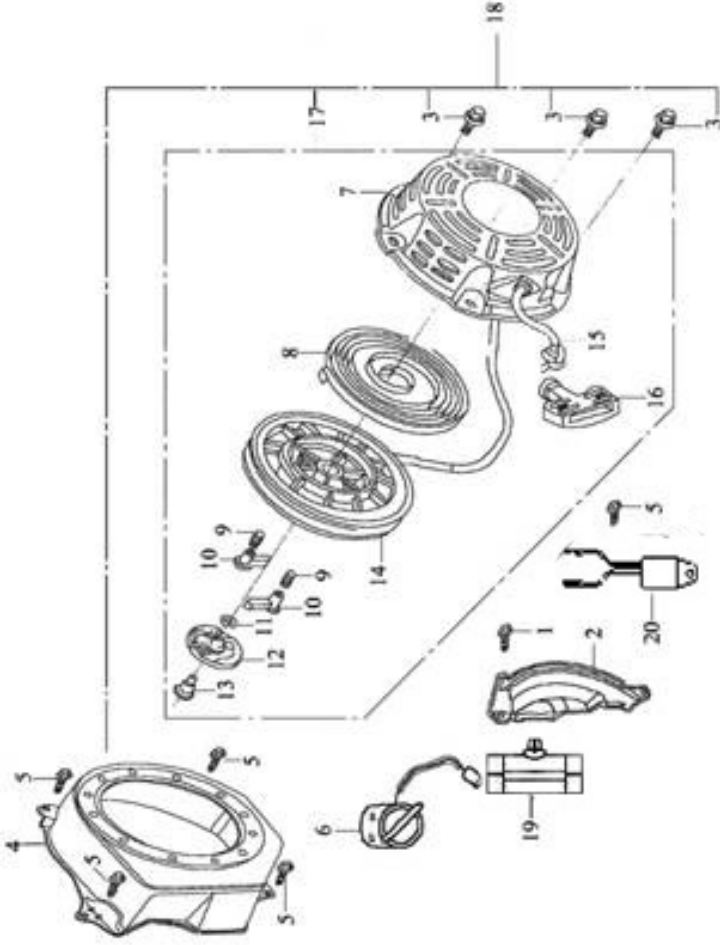
P/N	Part No	Description	Quantity	Remark
1	17111	Wing nut	2	
2	LWP17112/50ZB	Air cleaner cover	1	
3	LWP17120/50ZB	Filter element	1	
4	17121	Washer	2	
5	17200	Air cleaner housing	1	
6	GB3115	Screw M5 x 12	2	
7	LWP17114/50ZB	Air cleaner base	1	
8	17127	Gasket	1	
9	17100	Air cleaner assy	1	
10	GB6187	Nut M6	2	
11	GB5789	Screw M6 x 22	1	

# E-9 MUFFLER



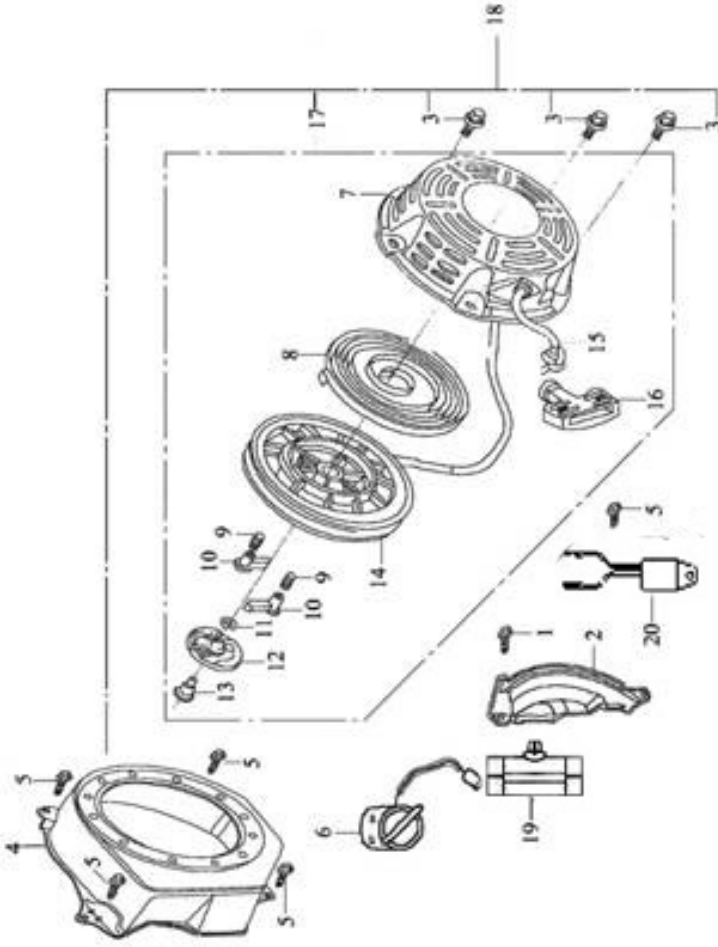
P/N	Part No		Description	Quantity	Remark
1	GB/T16674.2	S/R	Screw M5 x 8	4	
2	18200	S/R	Muffler hood	1	
3	GBT6170	S/R	Nut M8	2	
4	LWP18100/50ZB	LWP18100/50ZB	Muffler	1	
5	18000	S/R	Exhaust muffler	1	
6	LWP18215/50ZB	LWP18215/50ZB	Exhaust gasket	1	

# E-10 RECOIL STARTER



P/N	Part No	Description	Quantity	Remark
1	GB/T16674.2	Bolt M6 x 22	1	
2	19300	Crankcase side plate assy	1	
3	GB/T16674.2	Bolt M6 x 8	3	
4	19200	Fan hood assy	1	
5	GB/T1674.2	Bolt M6 x 12	5	
6	27300	Engine switch	1	
7	23200	Casing	1	
8	23114	Spiral spring	1	
9	23112	Ratchet spring	2	
10	23115	Ratchet	2	
11	23111	Friction spring	1	
12	23116	Spring lid	1	

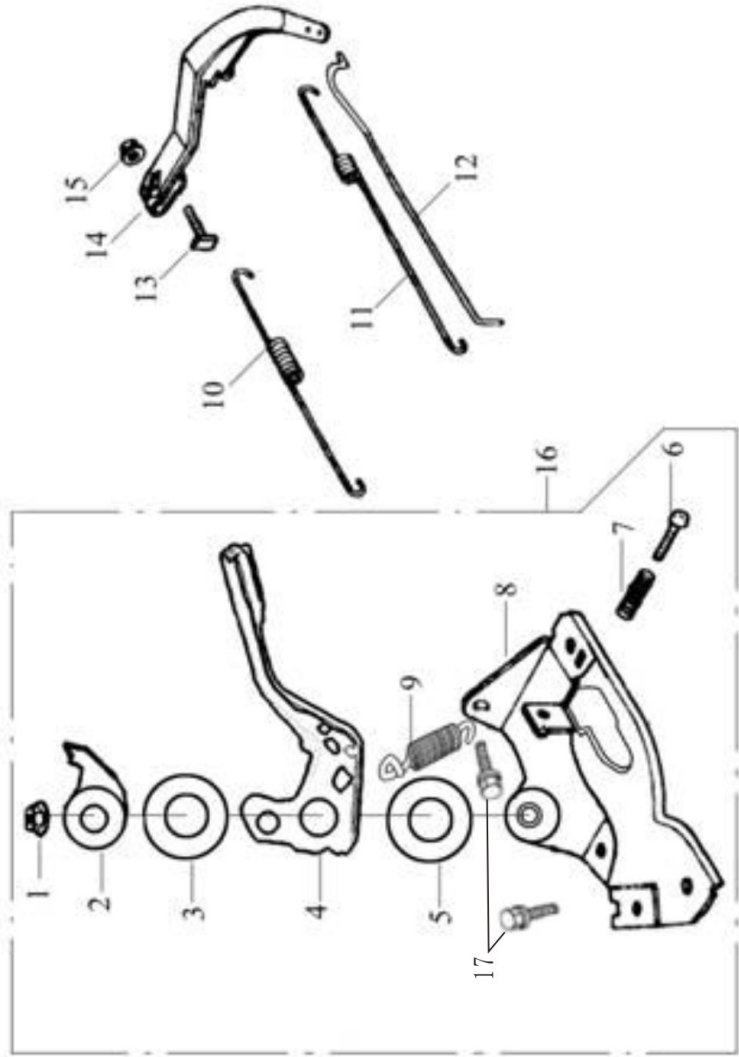
# E-10 RECOIL STARTER



P/N	Part No		Description	Quantity	Remark
13	23113	S/R	Set screw	1	
14	23117	S/R	Starter rolls	1	
15	23118	S/R	Rope	1	
16	23121	S/R	Pulling handle	1	
17	23100	S/R	Recoil starter	1	
18	27100	S/R	Recoil starter assy	1	
19	19313	S/R	Plastic clip	1	
20	27500	S/R	Diode	1	

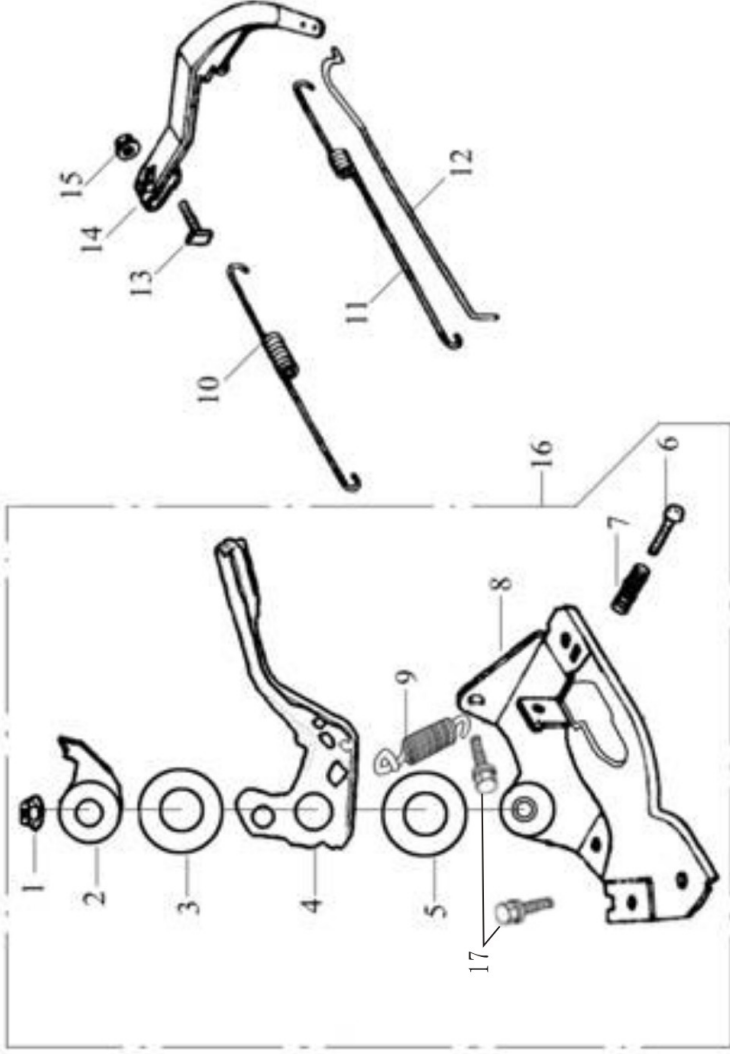


# E-11 GOVERNING CONTROL SYSTEM



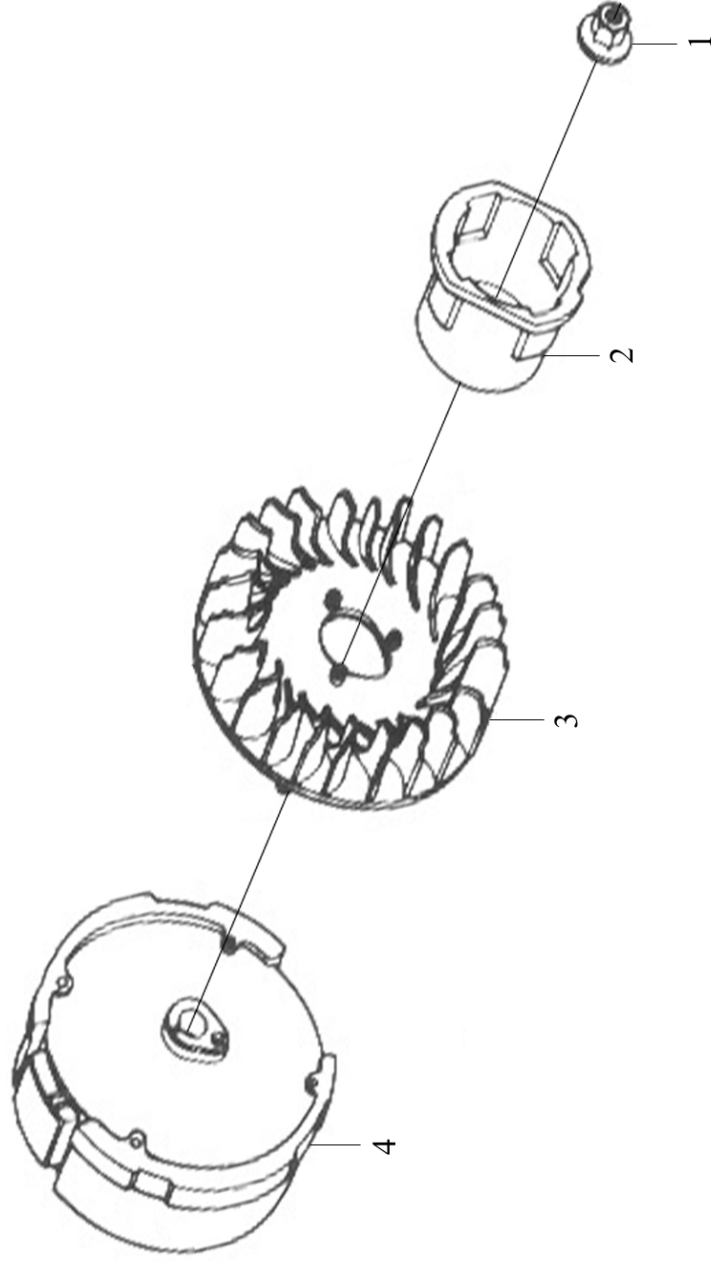
P/N	Part No.		Description	Quantity	Remark
1	GB/T6186	S/R	Nut M6	1	
2	26224	S/R	Setting Panel	1	
3	26223	S/R	Spring Patch	1	
4	26221	S/R	Handgrip assy	1	
5	26222	S/R	Washer	1	
6	GB/T818-2000-H	S/R	Bolt M5 x 25	1	
7	26215	S/R	Regulating spring	1	
8	26210	S/R	Support panel assy	1	
9	26214	S/R	Spring	1	
10	26117	S/R	Back spring	1	
11	26118	S/R	Fine regulating spring	1	

# E-11 GOVERNING CONTROL SYSTEM



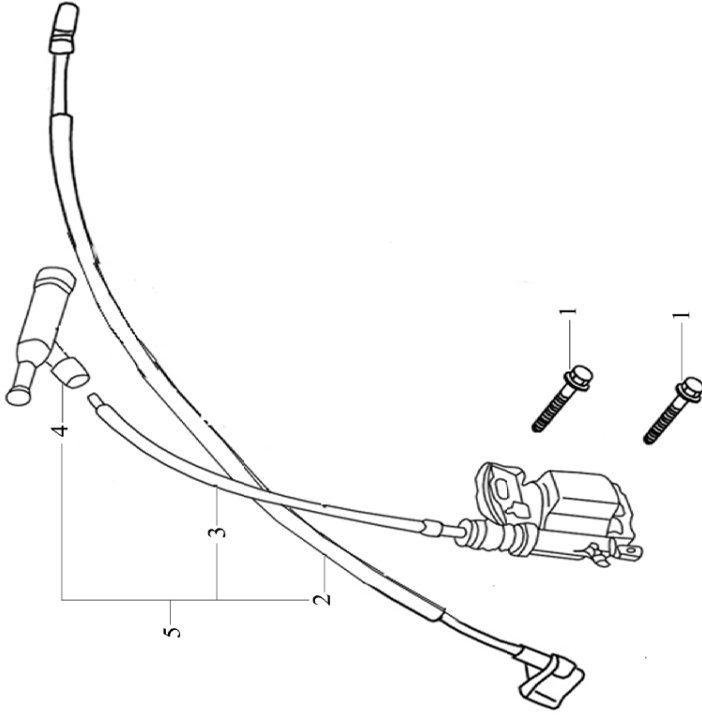
P/N	Part No.		Description	Quantity	Remark
12	26115	S/R	Pulling rod	1	
13	26116	S/R	Lock bolt	1	
14	26114	S/R	Regulating arm	1	
15	GB/T6187	S/R	Nut M6	1	
16	26200	S/R	Regulating frame assy	1	
17	GB/T16674.2	S/R	Bolt M6 x 12	2	

# E-12 FLYWHEEL



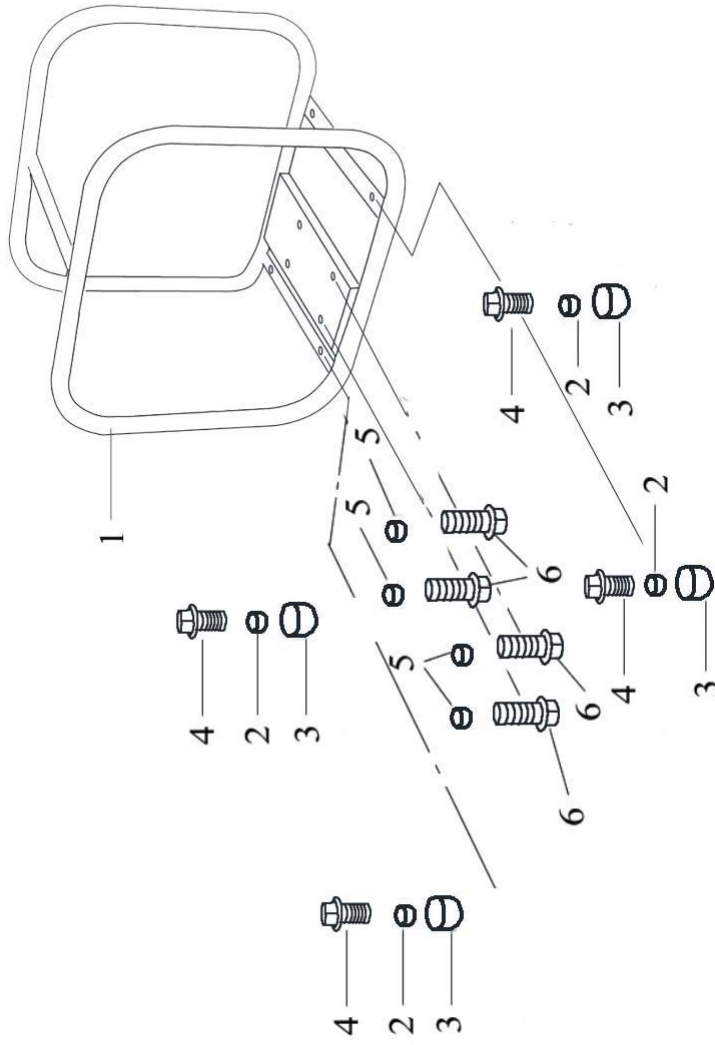
S/N	Part No.		Description	Quantity	Remark
1	23317	S/R	Nut M14 x 1.5	1	
2	23316/168F	S/R	Starting flange	1	
3	19111/168F	S/R	Flywheel fan	1	
4	23300/168F	S/R	Flywheel unit	1	

# E-13 IGNITION COIL



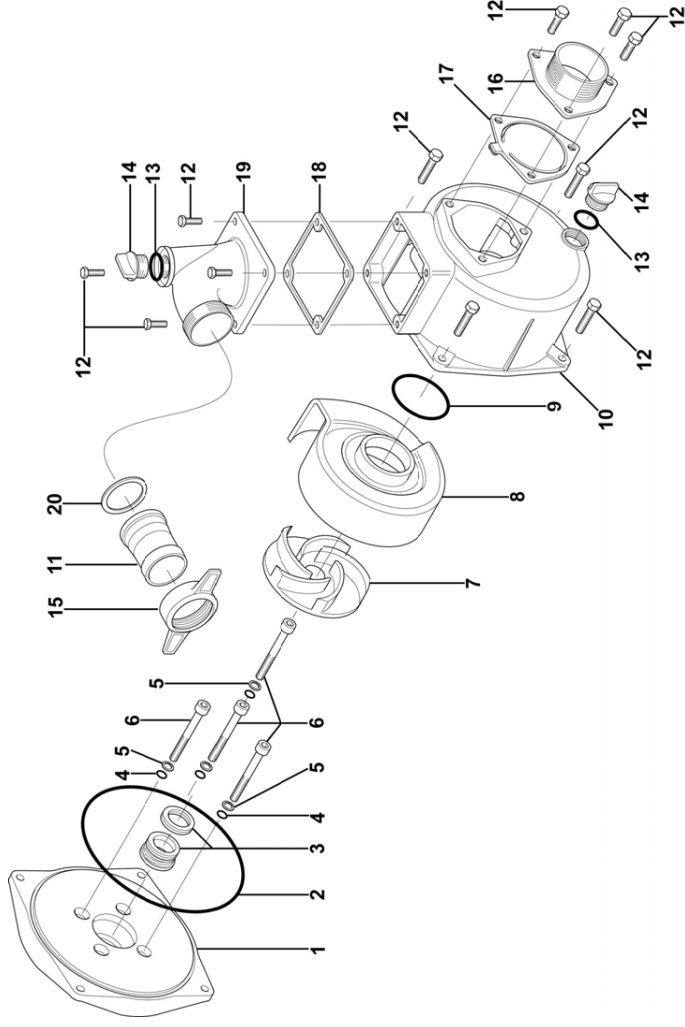
P/N	Part No.		Description	Quantity	Remark
1	GB/T16674.2	S/R	Screw M6 x 25	2	
2	27230/168F	S/R	Cable, engine stop	1	
3	27200/168F	S/R	Ignition coil	1	
4	27220/168F	S/R	Cap, spark plug	1	
5	27210/168F	S/R	Ignition coil unit	1	

E-15 FRAME



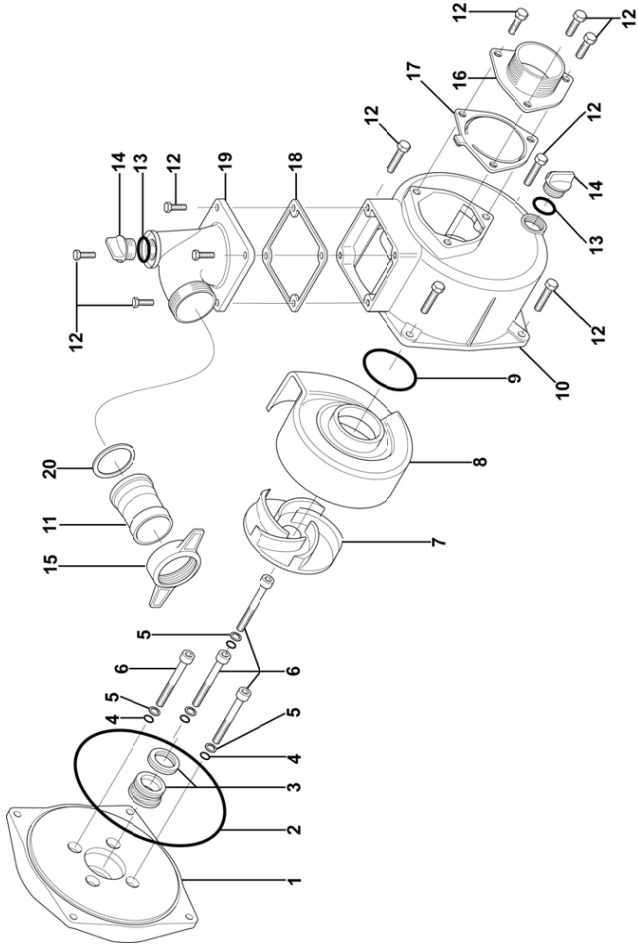
P/N	Part No.		Description	Quantity	Remark
1	32000	S/R	2" Frame sub-assy	1	
2	GB/T923-88	S/R	Nut M6	4	
3	LWP41310/50ZB	LWP41310/50ZB	Rubber	4	
4	GB/T5787	S/R	Bolt, M6 x 12	4	
5	GB/T6170	S/R	Nut, M8	4	
6	GB/T5787	S/R	Bolt, M8 x 32	4	

# E-15 WATER PUMP ASSY



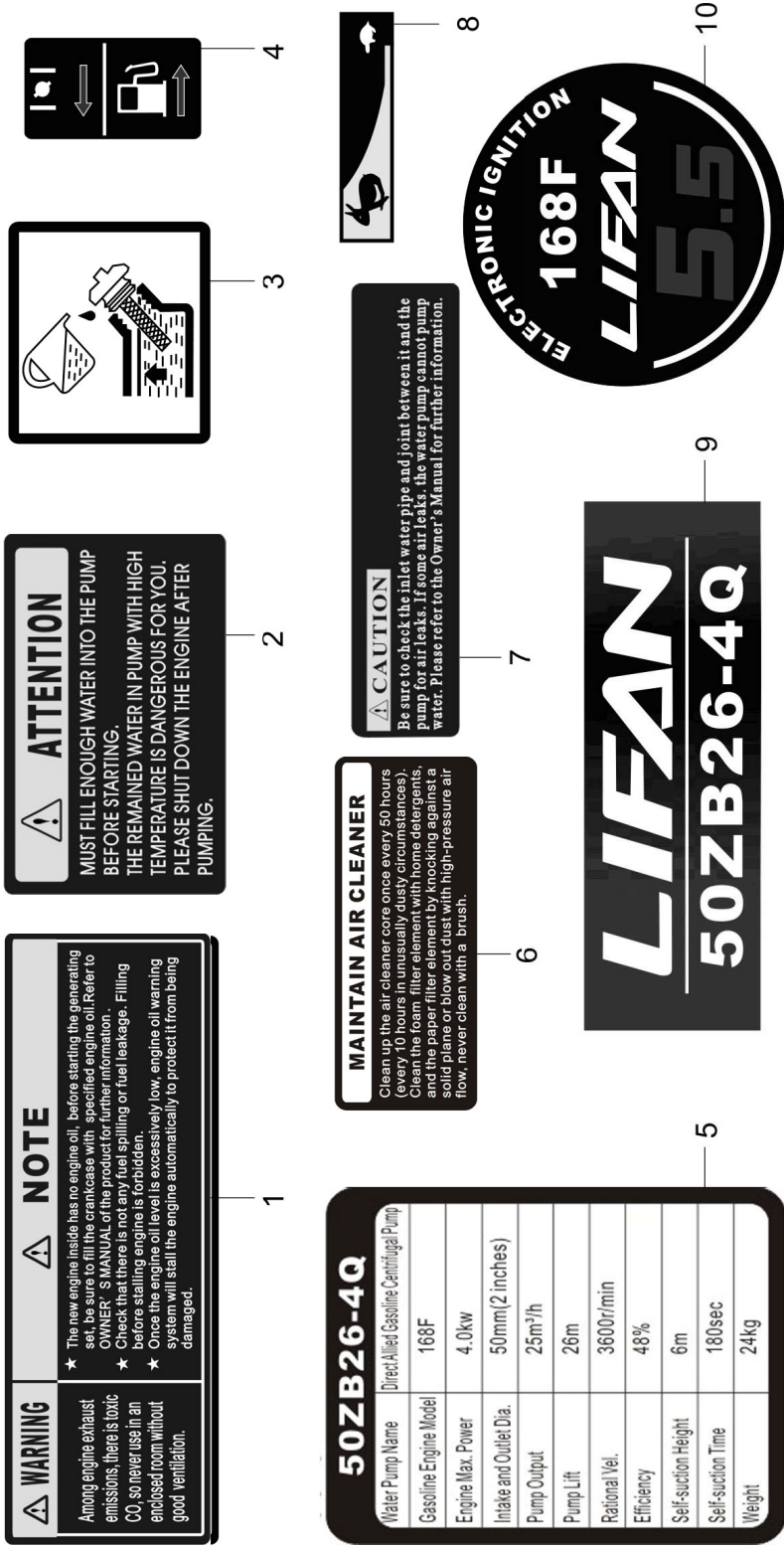
P/N	Part No.	Description	Quantity	Remark
1	LWP44112/50ZB	Housing, rear	1	
2	LWP44221/50ZB	O-ring	1	
3	LWP44230/50ZB	Seal, mechanical	1	
4	11119	O-ring	4	
5	51213	Washer, copper	4	
6	GB5787-86	Bolt, allen headed	4	
7	LWP44211/50ZB	Impeller	1	
8	LWP44212/50ZB	Cover, Impeller	1	
9	LWP44142/50ZB	O-Ring	1	
10	LWP44111/50ZB	Housing, Front	1	
11	LWP51218/50ZB	Pipe, 2"	2	
12	GB5787-86	Bolt, Hex	11	
13	LWP51242/50ZB	O-Ring	2	
14	LWP51241/50ZB	Plug, Drain	2	

# E-15 WATER PUMP ASSY



P/N	Part No.	Description	Quantity	Remark
15	LWP51217/50ZB	Union, hose 2"	2	
16	LWP44511/50ZB	Flange, Inlet 2"	1	
17	LWP44521/50ZB	Gasket, Inlet Flange	1	
18	LWP51262/50ZB	Gasket, Outlet Flange	1	
19	LWP51260/50ZB	Flange, Outlet 2"	1	
20	LWP51219/50ZB	Gasket, 2"	2	

# E-16 EMBLEM



P/N	Part No.	Description	Quantity	Remark
1	91125	S/R	1	
2	91135	S/R	1	
3	91112	S/R	1	Emblem, note or warning
4	91115	S/R	1	Emblem, Note: add water before using
5	91116	S/R	1	Emblem, adding oil
6	91113	S/R	1	Emblem, choke lever
7	91136	S/R	1	Emblem, nameplate
8	91114	S/R	1	Emblem, maintenance of air cleaner
9	91121	S/R	1	Emblem, Note: add oil before using
10	91111	S/R	1	Emblem, tortoise and rabbit
			1	Emblem, model
			1	Emblem, circle





## Recycling



**ENVIRONMENTAL PROTECTION:** Please recycle any unwanted materials as opposed to disposing them as general waste. It is recommended the original is retained and used to store the product when not in use for prolonged periods of time. If this is not applicable ensure the materials are sorted and recycled in accordance with local regulations.



**SPECIFICATION CHANGE:** It is our policy to continually improve products to ensure these meet the rigours of the industry we serve. Therefore, as such we reserve the right to alter specifications, data, components & parts with-out prior notice.

**WARRANTY:** Please refer to the manufactures terms & conditions.

**IMPORTANT:** No liability will be accepted for the incorrect use of this product.

### KEEP THIS BOOKLET FOR FUTURE REFERENCE

📞 Nottingham: 0115 946 1988 • London: 0208 830 3333    ✉ Nottingham: [sales@hscgroupuk.co.uk](mailto:sales@hscgroupuk.co.uk) • London: [sean@hscgroupuk.co.uk](mailto:sean@hscgroupuk.co.uk)    🌐 [www.hscgroupuk.co.uk](http://www.hscgroupuk.co.uk)

The Hire Supply Company Terms & Conditions Apply At All Time E&OE