



PARTS DRAWING



**240v 11,500Btu
Air Conditioner V2**

**Product Code:
SP11500ACV2**



Serial Number Range:

From:

To:

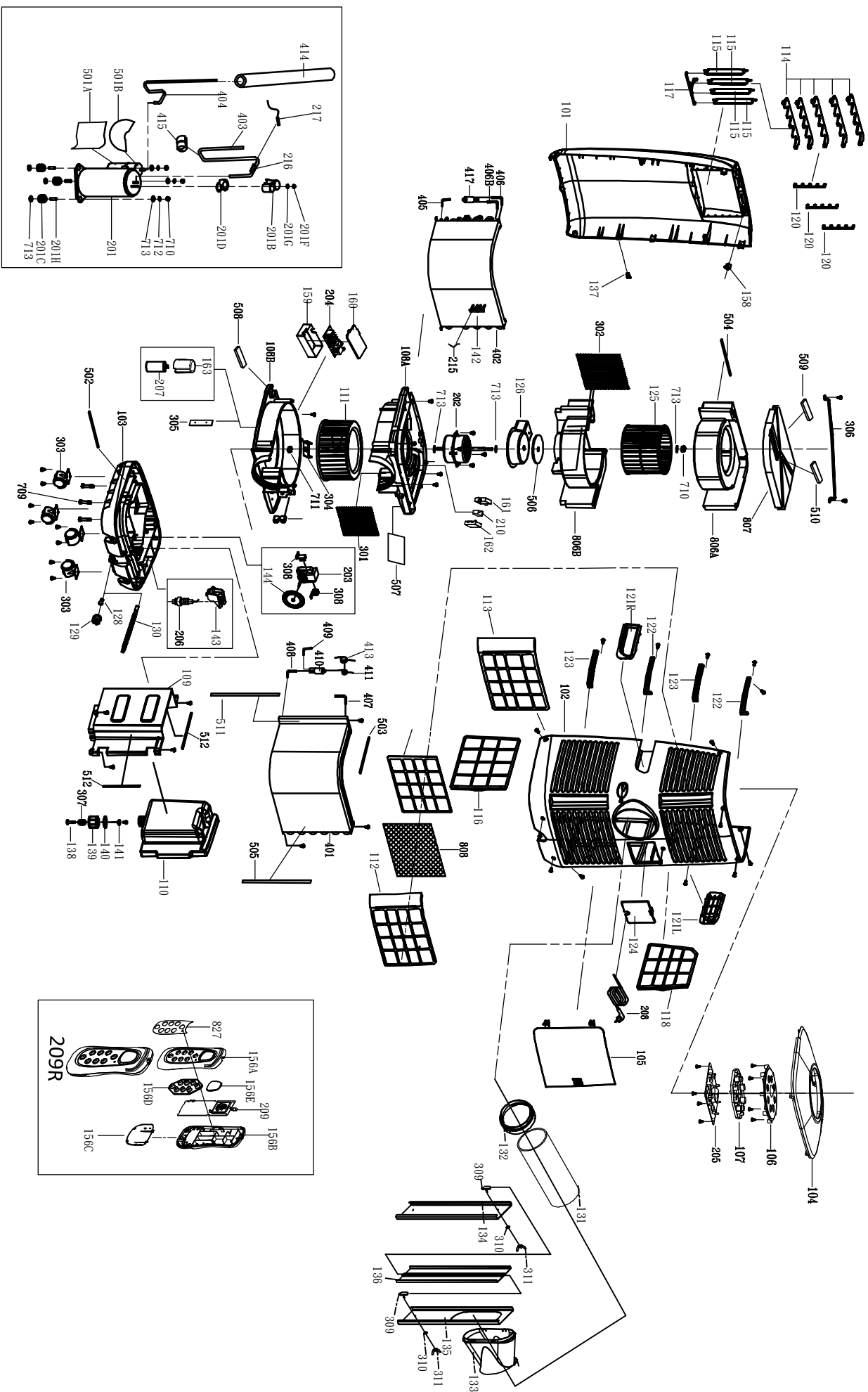
Year Of Manufacture:

***Please note, when ordering online via our website if the part number is not recognised,
please Email spares@hscgroupuk.co.uk or Telephone 0115 946 1988**

KEEP THIS BOOKLET FOR FUTURE REFERENCE

Nottingham: 0115 946 1988 • London: 0208 830 3333 ✉ Nottingham: sales@hscgroupuk.co.uk • London: sean@hscgroupuk.co.uk 🌐 www.hscgroupuk.co.uk

The Hire Supply Company Terms & Conditions Apply At All Time E&OE



Item No	Part Number	Description	Item No	Part Number	Description
101	AC1200/101	FRONT PANEL	141	AC1200/150	RUBBER PLUG FOR WATER TANK
102	AC1200/102	REAR PANEL	142	S/R	SENSOR FIXER
103	S/R	BOTTOM BASE	143	S/R	FLOAT BASE
104	AC1200/104	TOP PANEL	144	S/R	PUMPING BLADE
105	AC1200/105	WATER TANK DOOR	159	S/R	BOTTOM COVER FOR MAIN PC BOARD
106	S/R	CONTROL PANEL	160	S/R	TOP COVER FOR MAIN PC BOARD
107	S/R	RUBBER BUTTON PANEL	161	S/R	PROTECTION BOX (TOP) FOR FAN CAPACITOR
108A	AC1200108A	TOP FUNNEL FOR WIND-DUCT	162	S/R	PROTECTION BOX (BOTTOM) FOR FAN CAPACITOR
108B	AC1200108B	BOTTOM FUNNEL FOR WIND-DUCT	163	S/R	PROTECTION BOX FOR COMPRESSOR CAPACITOR
109	S/R	SEPERATING PANEL FOR WATER TANK	201	S/R	COMPRESSOR
110	AC1200/112	WATER TANK	201B	S/R	PROTECTIVE COVER FOR COMPRESSOR
111	S/R	DOWN FAN BLADE	201C	S/R	RUBBER GROMMET
112	AC1200/114	FILTER FRAME FOR EVAPORATOR	201D	S/R	PAD
113	AC1200/115	REAR FILTER FRAME FOR CONDENSOR	201F	S/R	NUT
114	AC1200/116	LOUVER (TOP & DOWN)	201G	S/R	PAD FOR NUT
115	AC1200/117	LOUVER (RIGHT & LEFT)	201H	S/R	ANTI-VIBRATION SOCKET
116	AC1200/118	SIDE FILTER FRAME FOR CONDENSOR	202	S/R	MOTOR
117	AC1200/119	LOUVER ROD (LEFT & RIGHT)	203	S/R	PUMP MOTOR
118	AC1200/120	SIDE FILTER FRAME FOR EVAPORATOR	204	AC1200/204	MAIN P.C. BOARD
119	AC1200/121	FILTER FIXER	205	AC1200/205	CONTROL P.C. BOARD
120	AC1200/122	LOUVER ROD (TOP & DOWN)	206	S/R	FLOAT LEVEL SWITCH
121L	S/R	LEFT HANDLE	207	AC1200/207	COMPRESSOR CAPACITOR
121R	S/R	RIGHT HANDLE	208	S/R	POWER CORD
122	S/R	FILTER TRACK (RIGHT)	209R	S/R	REMOTE CONTROL (INCLUDING #156A~F,#209, #827)
123	S/R	FILTER TRACK (LEFT)	210	AC1200/210	MOTOR CAPACITOR
124	AC1200/126	COVER FOR CORD COMPARTMENT	215	AC1200215	SENSOR WIRE WITH RESIN HEAD
125	S/R	UP FAN BLADE	216	AC1200216	R290 SENSOR TUBE WITH COPPER HEAD
126	S/R	WATERPROOF COVER FOR MOTOR	217	AC1200217	R290 SENSOR WIRE WITH COPPER HEAD
127	S/R	WIRING FIXER	301	S/R	HEAT-DISPENSATING SCREEN
128	AC1200/133	RUBBER STOPPER	302	S/R	AIR VENT SCREEN
129	AC1200/134	WATER STOPPER	303	AC1200/303	CASTER
130	S/R	DRAINAGE PIPE	304	S/R	FIXING CLIP FOR FAN-BLADE
131	AC12001415	150MM EXHAUST PIPE AND CONNECTOR	305	S/R	CLIP FOR EARTHING WIRE
132	AC12001415	150MM EXHAUST PIPE AND CONNECTOR	306	S/R	FIXTURE 2 FOR WIND-DUCT
133	AC120013	FISH TAIL ADAPTOR	307	AC1200/307	SPRING
134	SP11500ACWK	PVC WINDOW KIT (A)	308	S/R	FIXTURE FOR PUMP MOTOR
135	SP11500ACWK	PVC WINDOW KIT (B)	309	S/R	FIXING ACCESSORIES FOR WINDOW KIT
136	SP11500ACWK	PVC WINDOW KIT (C) ...	310	S/R	FIXING ACCESSORIES FOR WINDOW KIT
137	AC1200/146	SELF-LOCK SWITCH	311	S/R	FIXING ACCESSORIES FOR WINDOW KIT
138	AC1200/147	LOUVER FOR WATER TANK	401	S/R	CONDENSER
139	AC1200/148	CLOSING KNOB FOR WATER TANK	402	S/R	EVAPORATOR
140	AC1200/149	SEALED RING FOR WATER TANK	403	S/R	DISCHARGING TUBE

Item No	Part Number	Description	Item No	Part Number	Description
404	S/R	SUCTION TUBE	601	S/R	WIRE SET
405	S/R	INLET TUBE FOR EVAPORATOR	701	S/R	SCREWS
406	S/R	OUTLET TUBE A FOR EVAPORATOR	801	S/R	CARTON BOX
406B	S/R	OUTLET TUBE B FOR EVAPORATOR	802	S/R	CARTON BOTTOM BASE
407	S/R	INLET TUBE FOR CONDENSOR	804	S/R	PACKAGE POLYFOAM (UP)
408	S/R	OUTLET TUBE FOR CONDENSOR	805	S/R	PACKAGE POLYFOAM (BASE)
409	S/R	REFRIGERANT CHARGING TUBE	806A	S/R	POLYFOAM WINDUCT (TOP)
410	S/R	DRYER	806B	S/R	POLYFOAM WINDUCT (BOTTOM)
411	S/R	CAPILLARY TUBE	807	S/R	COVER FOR POLYFOAM WINDUCT
413	S/R	SLEEVE FOR CAPILLARY	808	AC1200/808	ACTIVE CARBON FILTER
414	S/R	THERMAL SLEEV	809	S/R	RATING LABEL
417	S/R	3 WAY VALVE	812	S/R	PLASTIC BAG FOR UNIT
501A	S/R	DOWN RUBBER FOAM FOR ACCUMULATOR	813	S/R	INSTRUCTION MANUAL
501B	S/R	UP RUBBER FOAM FOR ACCUMULATOR	814	S/R	PLASTIC BAG FOR I/M
502	S/R	UP SEALED FOAM FOR AIR VENT	816	S/R	PLASTIC BAG FOR REMOTE CONTROL
503	S/R	SEALED FOAM FOR CONDENSER	817	S/R	DIAGRAM
504	S/R	SEALED FOAM FOR TOP AIR VENT	827	S/R	NAMEPLATE FOR REMOTE CONTROL
505	S/R	PROTECTION FOAM FOR REAR PANEL			
506	S/R	WATERPROOF FOAM FOR MOTOR COVER			
507	S/R	WATER PROOF FOAM FOR TOP FUNNEL			
508	S/R	SEALED FOAM FOR ACCESSORY PIPES			
509	S/R	ANTI-VIBRATION FOAM FOR TOP PANEL 1			
510	S/R	ANTI-VIBRATION FOAM FOR TOP PANEL 3			
511	S/R	SEALED FOAM FOR AIR VENT (BOTTOM)			
512	S/R	SEALED FOAM FOR BOTTOM BASE			



Recycling



ENVIRONMENTAL PROTECTION: Please recycle any unwanted materials as opposed to disposing them as general waste. It is recommended the original is retained and used to store the product when not in use for prolonged periods of time. If this is not applicable ensure the materials are sorted and recycled in accordance with local regulations.



SPECIFICATION CHANGE: It is our policy to continually improve products to ensure these meet the rigours of the industry we serve. Therefore, as such we reserve the right to alter specifications, data, components & parts with-out prior notice.

WARRANTY: Please refer to the manufactures terms & conditions.

IMPORTANT: No liability will be accepted for the incorrect use of this product.

KEEP THIS BOOKLET FOR FUTURE REFERENCE

📞 Nottingham: 0115 946 1988 • London: 0208 830 3333 ✉ Nottingham: sales@hscgroupuk.co.uk • London: sean@hscgroupuk.co.uk 🌐 www.hscgroupuk.co.uk

The Hire Supply Company Terms & Conditions Apply At All Time E&OE