



# PARTS DRAWING



**Elite 110v 60ltr Wet  
& Dry Vacuum**

**Product Code:  
RVK60110**



Serial Number Range:

From:

To:

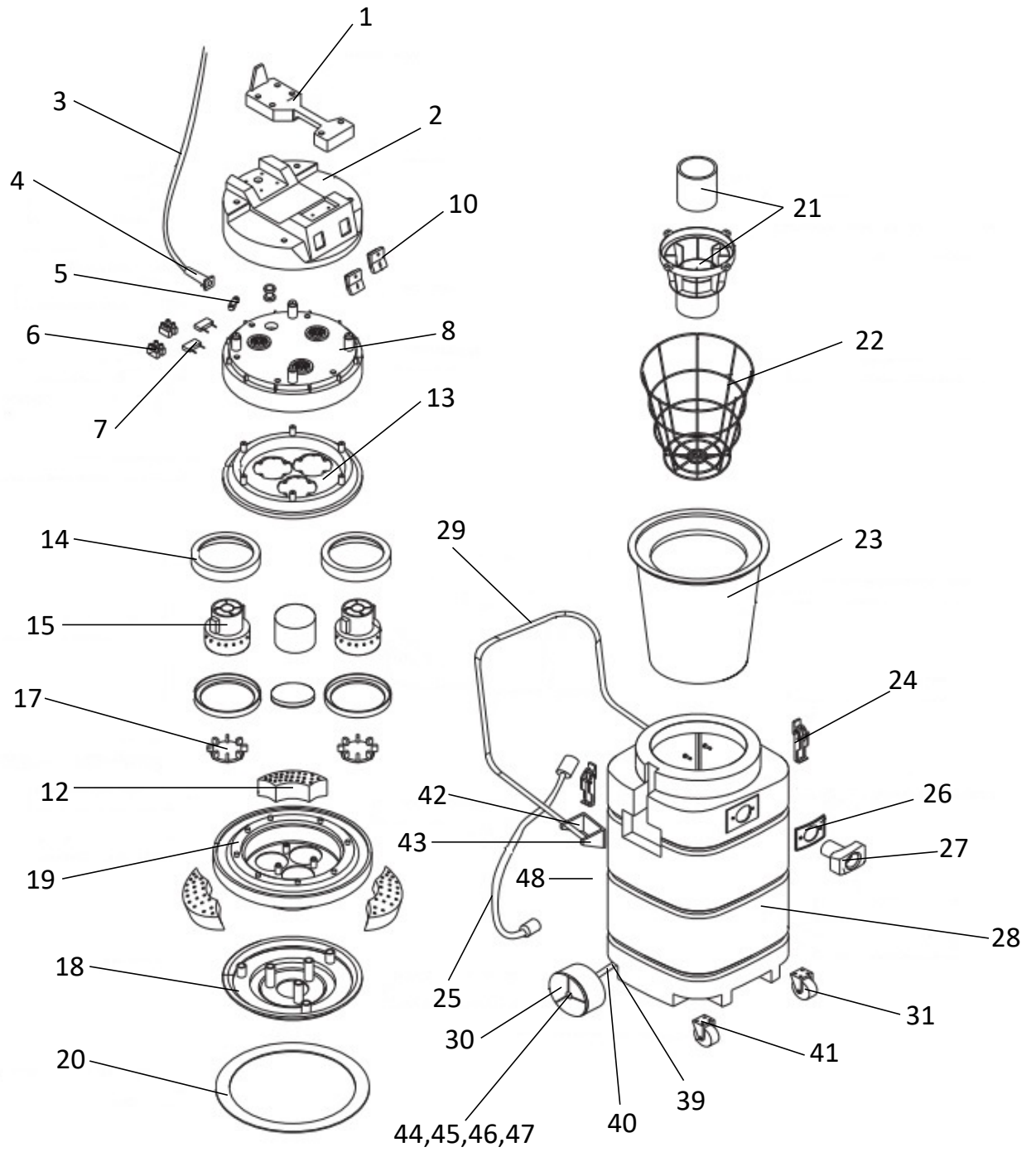
Year Of Manufacture:

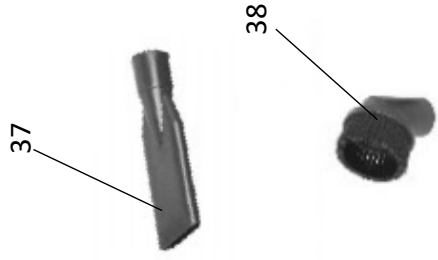
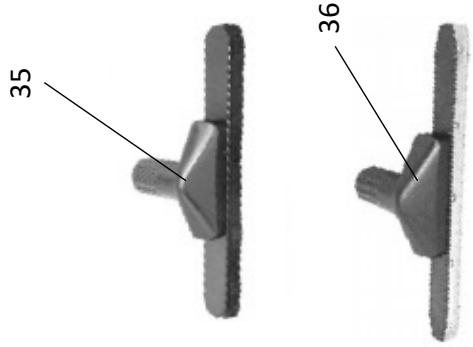
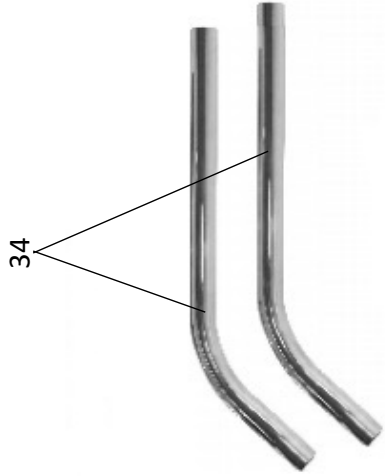
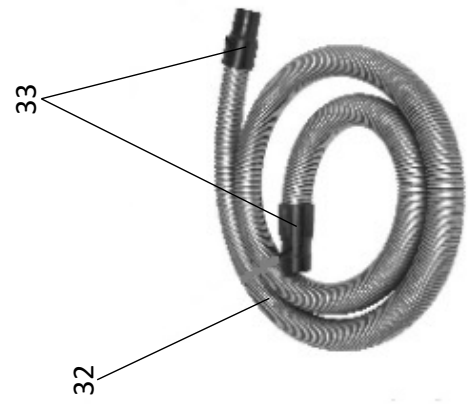
**\*Please note, when ordering online via our website if the part number is not recognised,  
please Email [spares@hscgroupuk.co.uk](mailto:spares@hscgroupuk.co.uk) or Telephone 0115 946 1988**

**KEEP THIS BOOKLET FOR FUTURE REFERENCE**

Nottingham: 0115 946 1988 • London: 0208 830 3333 ✉ Nottingham: [sales@hscgroupuk.co.uk](mailto:sales@hscgroupuk.co.uk) • London: [sean@hscgroupuk.co.uk](mailto:sean@hscgroupuk.co.uk) 🌐 [www.hscgroupuk.co.uk](http://www.hscgroupuk.co.uk)

The Hire Supply Company Terms & Conditions Apply At All Time E&OE





Item No	Part Number	Description
1	RVK60/1	RVK60 TOP HANDLE
2	RVK60/2	RVK60 TOP COVER
3	RVK60/3	RVK60 DUAL VOLTAGE MAINS LEAD
4	RVK60/4	RVK60 CABLE GLAND
5	RVK60/5	RVK60 CABLE CLAMP
6	RVK60/6	RVK60 CONNECTOR BLOCK
7	RVK60/7	RVK60 RESISTOR
8	RVK60/8	RVK60 PERISPHERE
10	RVK60/10	RVK60 DUAL VOLTAGE MAINS SWITCH
12	RVK60/12	RVK60 MOTOR FOAM
13	RVK60/13	RVK60 FIXED MOTOR COVER
14	RVK60/14	RVK60 MOTOR GASKET
15	RVK60/15240	RVK60 240V MOTOR
15	RVK60/15110	RVK60 110V MOTOR
17	RVK60/17	RVK60 MOTOR SEATING VALVE
18	RVK60/18	RVK60 LOWER MOTOR CASING
19	RVK60/19	RVK60 MOTOR BASE FRAME
20	RVK60/20	RVK60 SEALING RING
21	RVK60/21	RVK60 FLOAT INC GUARD
22	RVK60/22	RVK60 FILTER BASKET
23	RVK60/23	RVK60 COMPLETE DRY FILTER NO BASKET
24	RVK60/24	RVK60 SIDE CATCH
25	RVK60/25	RVK60 DRAIN HOSE
26	RVK60/26	RVK60 HOSE INLET GASKET
27	RVK60/27	RVK60 HOSE INLET
28	RVK60/28	RVK60 MARK 1 DRUM ONLY
28	RVK60/28MK2	RVK60 MARK 2 DRUM ONLY
29	RVK60/29	RVK60 DRUM HANDLE ONLY
30	RVK60/30	RVK60 REAR WHEEL
31	RVK60/31	RVK60 MARK 1 FRONT WHEEL
31	RVK60/31MK2	RVK60 MARK 2 FRONT WHEEL
32	RVK60/32	RVK60 FLEXIBLE HOSE
33	RVK60/33	RVK60 SHORT & LONG HOSE CONNECTOR (PAIR)
34	RVK60/34	RVK60 STEEL EXT TUBE (PAIR)
35	RVK60/35	RVK60 FLOOR TOOL
36	RVK60/36	RVK60 SQUEEGEE FLOOR TOOL
37	RVK60/37	RVK60 CREVIS NOZZLE
38	RVK60/38	RVK60 DUSTING BRUSH
39	RVK60/39	RVK60 AXLE SUPPORT (PAIR)
40	RVK60/40	RVK60 AXLE
41	RVK60/41	RVK60 FRONT CASTOR FIXING SCREW
42	RVK60/42	RVK60 FRONT HANDLE SUPPORT
43	RVK60/43	RVK60 REAR HANDLE SUPPORT
44	RVK60/44	RVK60 REAR WHEEL DOME CAP
45	RVK60/45	RVK60 REAR WHEEL CIRCLIP
46	RVK60/46	RVK60 REAR WHEEL SPRING WASHER
47	RVK60/47	RVK60 REAR WHEEL WASHER
48	RVK60/48	RVK60 DRAIN HOSE CLIP



## Recycling



**ENVIRONMENTAL PROTECTION:** Please recycle any unwanted materials as opposed to disposing them as general waste. It is recommended the original is retained and used to store the product when not in use for prolonged periods of time. If this is not applicable ensure the materials are sorted and recycled in accordance with local regulations.



**SPECIFICATION CHANGE:** It is our policy to continually improve products to ensure these meet the rigours of the industry we serve. Therefore, as such we reserve the right to alter specifications, data, components & parts with-out prior notice.

**WARRANTY:** Please refer to the manufactures terms & conditions.

**IMPORTANT:** No liability will be accepted for the incorrect use of this product.

### KEEP THIS BOOKLET FOR FUTURE REFERENCE

📞 Nottingham: 0115 946 1988 • London: 0208 830 3333    ✉ Nottingham: [sales@hscgroupuk.co.uk](mailto:sales@hscgroupuk.co.uk) • London: [sean@hscgroupuk.co.uk](mailto:sean@hscgroupuk.co.uk)    🌐 [www.hscgroupuk.co.uk](http://www.hscgroupuk.co.uk)

The Hire Supply Company Terms & Conditions Apply At All Time E&OE