



PARTS DRAWING



Vonarx SC20 110v Floor Scraper

**Product Code:
VASC20E110**

Serial Number Range:

From:

To:

Year Of Manufacture:



***Please note, when ordering online via our website if the part number is not recognised, please Email spares@hscgroupuk.co.uk or Telephone 0115 946 1988**

KEEP THIS BOOKLET FOR FUTURE REFERENCE

Nottingham: 0115 946 1988 • London: 0208 830 3333 ✉ Nottingham: sales@hscgroupuk.co.uk • London: sean@hscgroupuk.co.uk 🌐 www.hscgroupuk.co.uk

The Hire Supply Company Terms & Conditions Apply At All Time E&OE

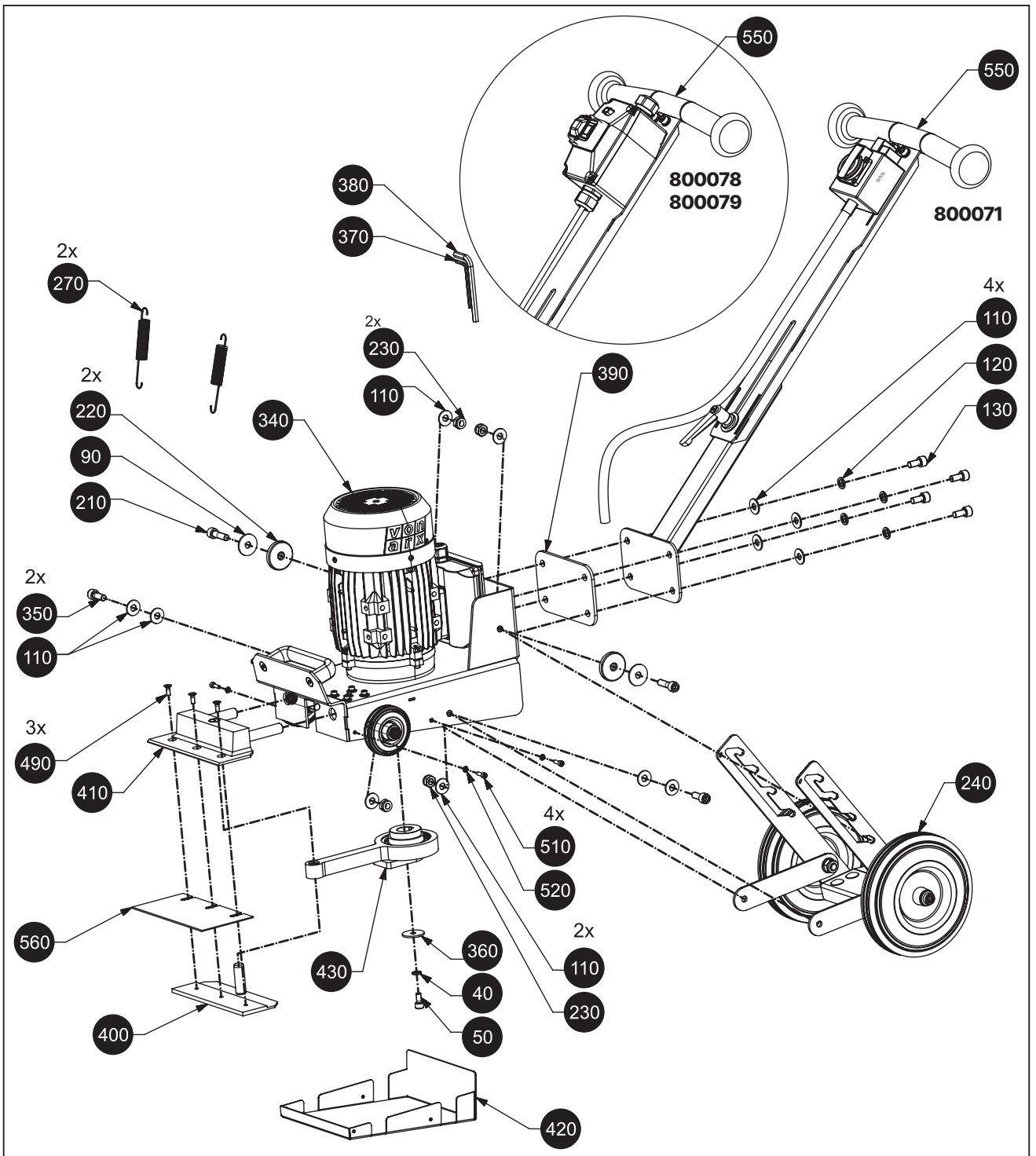
LIST OF SPARE PARTS



Only use original Von Arx EOOD spare parts or the replacement parts indicated in the parts list.

SC-20 floor scrapper

Article codes: **A) 800071** - 230 V / 50 Hz, **B) 800078** - 115 V / 50 Hz, **C) 800079** - 115 V / 60 Hz



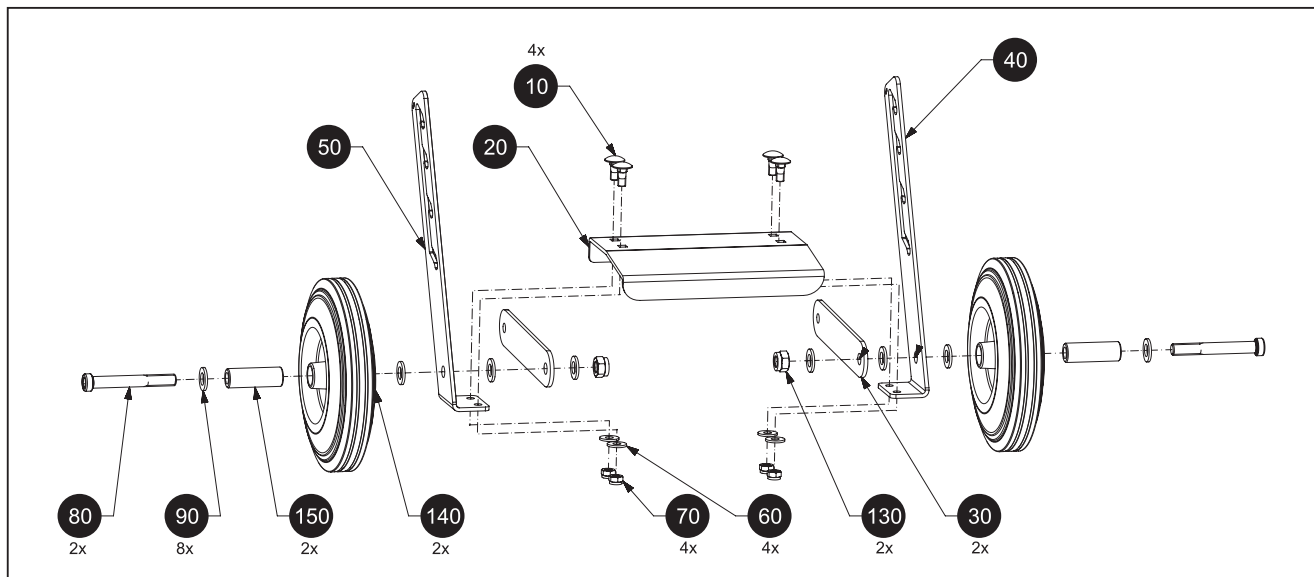
Back to the Table of contents ▲

No	Article	Part Name	Type	Qty	No	Article	Part Name	Type	Qty
40	100618	WASHER	A, B, C	1	400	400077	BLADE HOLDER A, B, C		1
50	300009	SCREW	A, B, C	1	410	400102	BLADE HOLDER A, B, C		1
90	108540	WASHER	A, B, C	2	420	400108	COVER	A, B, C	1
110	300015	WASHER	A, B, C	12	430	400109	CRANK SET	A, B, C	1
120	104715	WASHER	A, B, C	4	490	101646	SCREW	A, B, C	3
130	102198	SCREW	A, B, C	4	510	100595	SCREW	A, B, C	4
210	300018	SCREW	A, B, C	2	520	104727	WASHER	A, B, C	4
220	400036	WASHER	A, B, C	2	550	400126	HANDLE SET	A	1
230	100283	NUT	A, B, C	4	550	400501	HANDLE SET	B, C	1
240	400037	PEDAL SET	A, B, C	1	560	400110	BLADE	A, B, C	1
270	400038	SPRING	A, B, C	2	570	400221	STICKER	A, B, C	2
340	400040	CHASSIS	A	1	590	111182	STICKER	A, B, C	2
340	400502	CHASSIS	B	1	600	115647	STICKER	A, B, C	1
340	400503	CHASSIS	C	1	610	708794	STICKER	A, B, C	1
350	300006	SCREW	A, B, C	2	620	701669	STICKER	A, B, C	1
360	108540	WASHER	A, B, C	1	630	706129	STICKER	A, B, C	1
370	300034	HEX KEY	A, B, C	1	640	400237	STICKER	A, B, C	6
380	300033	HEX KEY	A, B, C	1	650	900311	STICKER	A, B, C	1
390	400049	ADAPTER	A, B, C	1					

Pedal set

Article code: 400037

No	Article	Part Name	Qty	No	Article	Part Name	Qty
10	300020	BOLT	4	70	100263	NUT	4
20	400032	PEDAL	1	80	300022	SCREW	2
30	400035	SUPPORT HINGE	2	90	100129	WASHER	8
40	400033	SUPPORT	1	130	108682	NUT	2
50	400034	SUPPORT	1	140	300039	WHEEL	2
60	300010	WASHER	4	150	400043	REDUCTOR	2



▲ Back to the Table of contents

Crank set

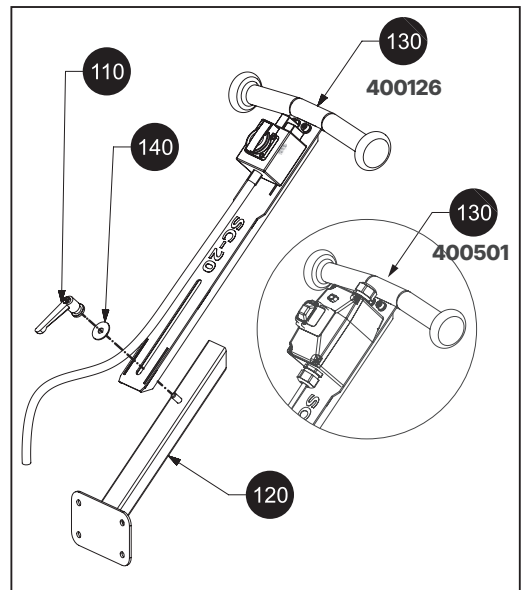
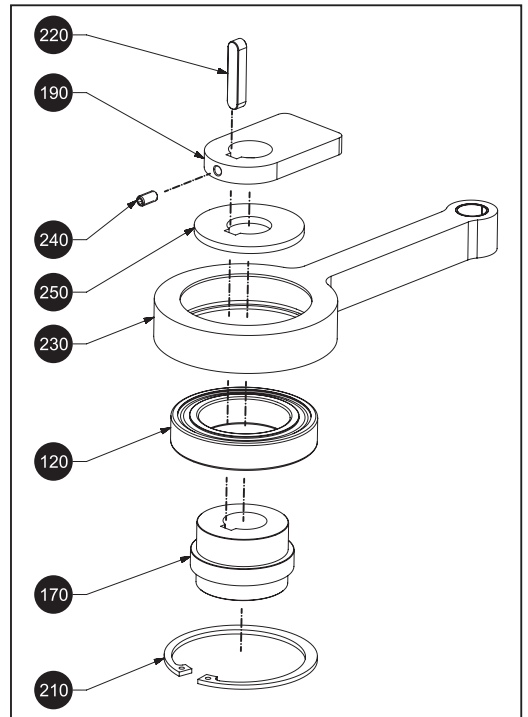
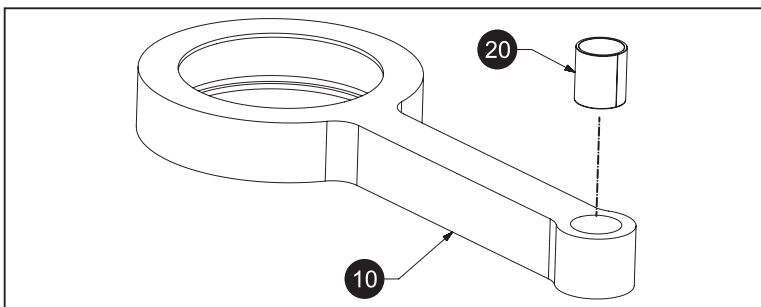
Article code: 400109

No	Article	Part Name	Qty
120	300049	BEARING	1
170	400114	AXLE	1
190	400115	CONSOLE	1
210	108723	RETAINING RING	1
220	108006	PARALLEL KEY	1
230	400119	CRANKARM	1
240	300013	SETSCREW	1
250	400055	SPACER	1

Crank arm

Article code: 400119

No	Article	Part Name	Qty
10	400105	CRANK ARM	1
20	300077	BUSHING	1



Handle set

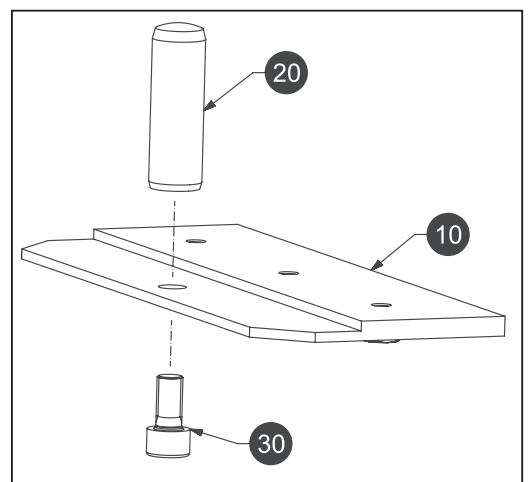
Article codes: A) 400126 - 230 V / 50 Hz, B) 400501 - 115 V / 50, 60 Hz

No	Article	Part Name	Type	Qty
110	300059	CLAMPING HANDLE	A, B	1
120	400127	HANDLE SET	A, B	1
130	400142	HANDLE SET A	A	1
130	400500	HANDLE SET B	B	1
140	108540	WASHER	A, B	1

Blade holder bottom

Article code: 400077

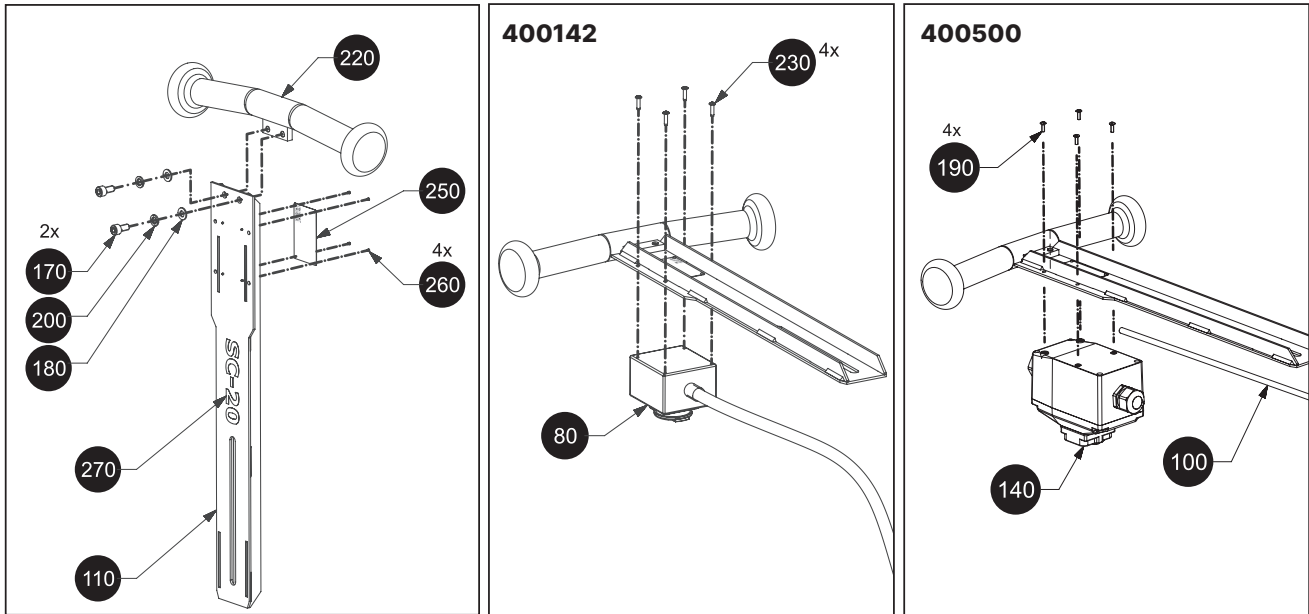
No	Article	Part Name	Qty
10	400117	BLADE HOLDER	1
20	300076	PIN	1
30	100286	SCREW	1



Back to the Table of contents

Handle set top

Article codes: **A) 400142** - 230 V / 50 Hz, **B) 400500** - 115 V / 50, 60 Hz

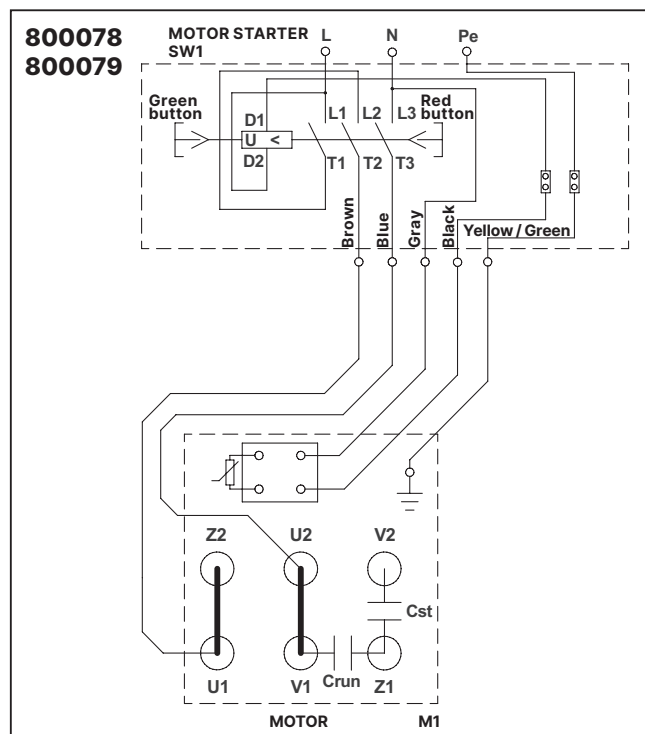
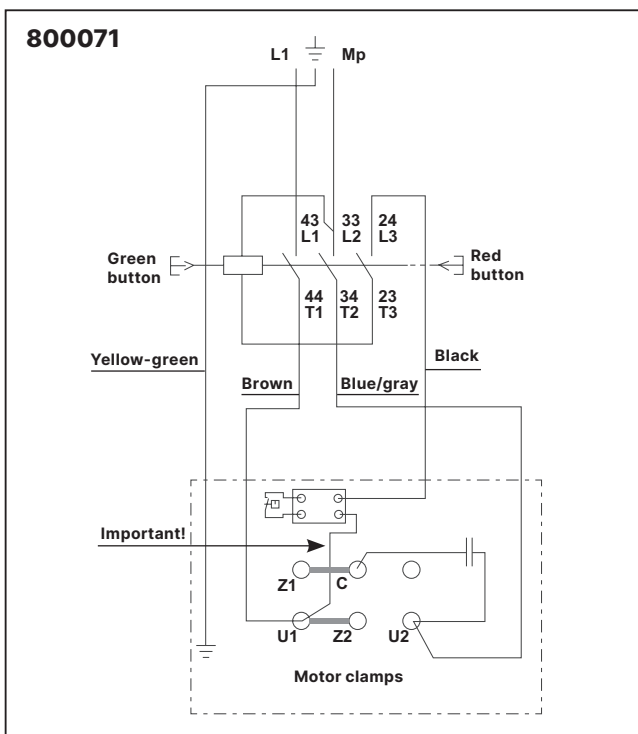


No	Article	Part Name	Type	Qty
80	109373	SWITCH BOX	A	1
100	900551	CABLE 5 X 1.5	B	0.8 m
110	400144	HANDLE SET	A, B	1
140	900282	SWITCH BOX	B	1
170	100286	SCREW	A, B	2
180	101670	WASHER	A, B	2
190	300084	SCREW	B	4

No	Article	Part Name	Type	Qty
200	100618	WASHER	A, B	2
220	400134	HANDLE BAR	A, B	1
230	300083	SCREW	A, B	4
250	400220	PLATE	A, B	1
260	108214	SCREW	A, B	4
270	400222	STICKER	A, B	1
280	115668	CABLE 3 X 1.5	B	1.0 m

Wiring diagram

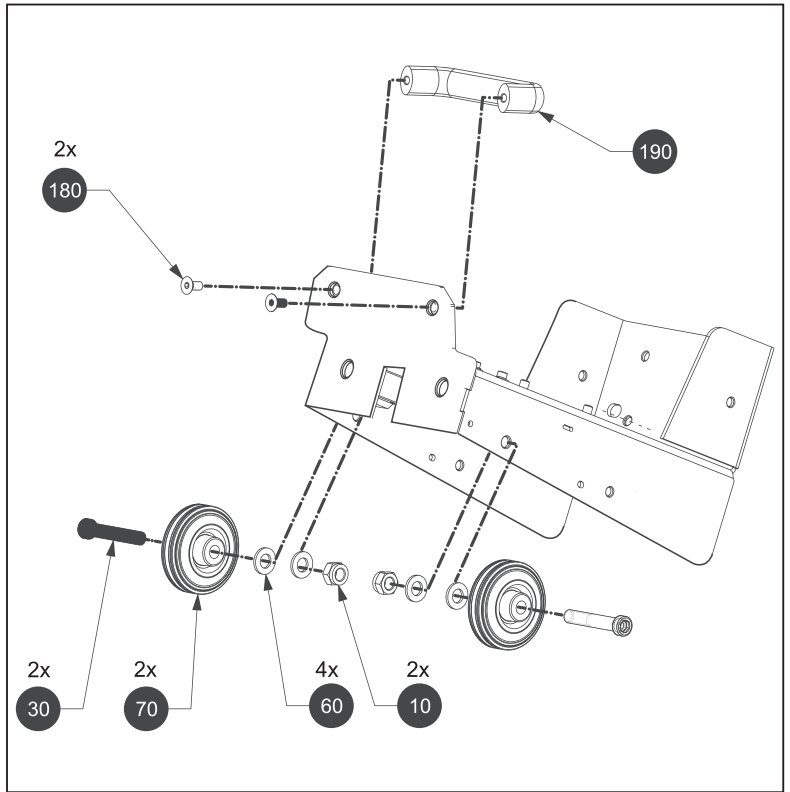
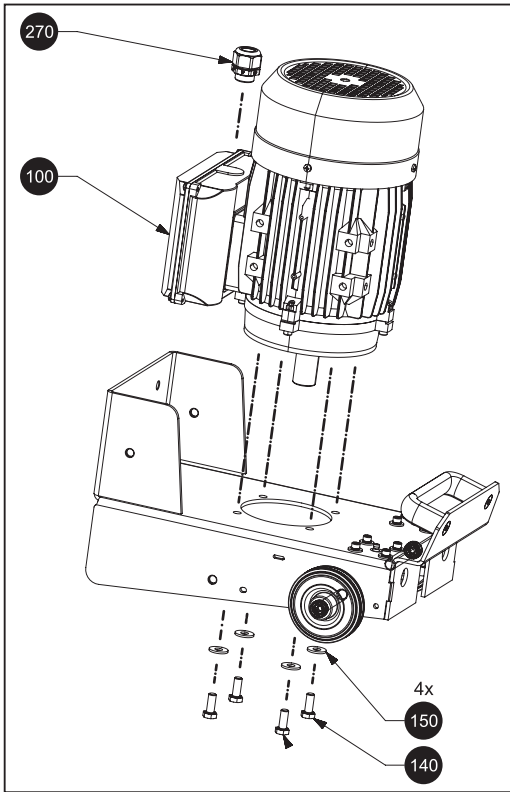
Article codes: **A) 800071** - 230 V / 50 Hz, **B) 800078** - 115 V / 50 Hz, **C) 800079** - 115 V / 60 Hz



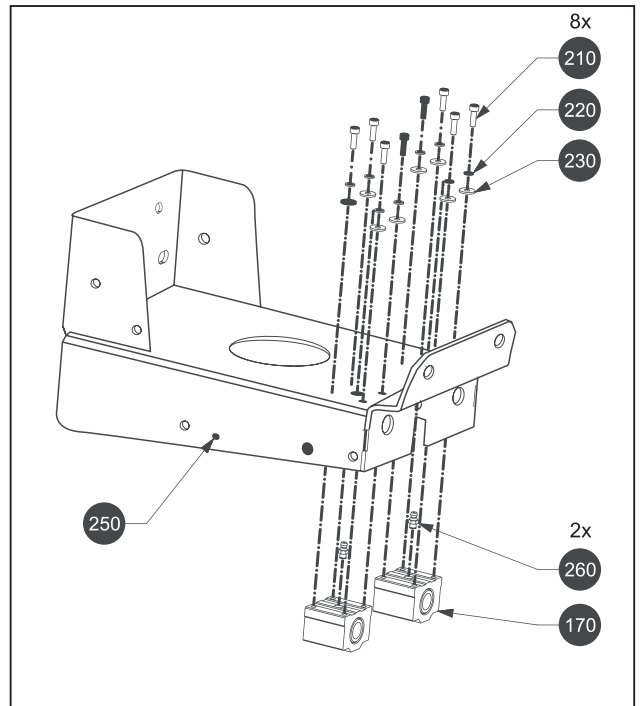
Back to the Table of contents ▲

Chassis

Article codes: A) 400040 - 230 V / 50 Hz, B) 400502 - 115 V / 50 Hz, C) 400503 - 115 V / 60 Hz



No	Article	Part Name	Type	Qty
10	108682	NUT		2
30	300026	SCREW		2
60	100129	WASHER		4
70	300031	WHEEL		2
100	900307	ELECTRIC MOTOR 230V / 50Hz	A	1
100	900435	ELECTRIC MOTOR 115V / 50Hz	B	1
100	900436	ELECTRIC MOTOR 115V / 60Hz	C	1
140	300016	SCREW		4
150	300010	WASHER		4
170	300073	LINEAR BEARING		2
180	101669	SCREW		2
190	300075	HANDLE		1
210	100595	SCREW		8
220	104727	WASHER		8
230	300080	WASHER		8
250	400116	CHASSIS		1
260	300046	OIL NIPPLE		2
270	114813	CABLE GLAND		1



▲
Back to the Table of contents



Recycling



ENVIRONMENTAL PROTECTION: Please recycle any unwanted materials as opposed to disposing them as general waste. It is recommended the original is retained and used to store the product when not in use for prolonged periods of time. If this is not applicable ensure the materials are sorted and recycled in accordance with local regulations.



SPECIFICATION CHANGE: It is our policy to continually improve products to ensure these meet the rigours of the industry we serve. Therefore, as such we reserve the right to alter specifications, data, components & parts with-out prior notice.

WARRANTY: Please refer to the manufactures terms & conditions.

IMPORTANT: No liability will be accepted for the incorrect use of this product.

KEEP THIS BOOKLET FOR FUTURE REFERENCE

📞 Nottingham: 0115 946 1988 • London: 0208 830 3333 ✉ Nottingham: sales@hscgroupuk.co.uk • London: sean@hscgroupuk.co.uk 🌐 www.hscgroupuk.co.uk

The Hire Supply Company Terms & Conditions Apply At All Time E&OE