



PARTS DRAWING



Vonarx SC35 110v Floor Scraper

**Product Code:
VASC35E110**

Serial Number Range:

From:

To:

Year Of Manufacture:



***Please note, when ordering online via our website if the part number is not recognised, please Email spares@hscgroupuk.co.uk or Telephone 0115 946 1988**

KEEP THIS BOOKLET FOR FUTURE REFERENCE

Nottingham: 0115 946 1988 • London: 0208 830 3333 ✉ Nottingham: sales@hscgroupuk.co.uk • London: sean@hscgroupuk.co.uk 🌐 www.hscgroupuk.co.uk

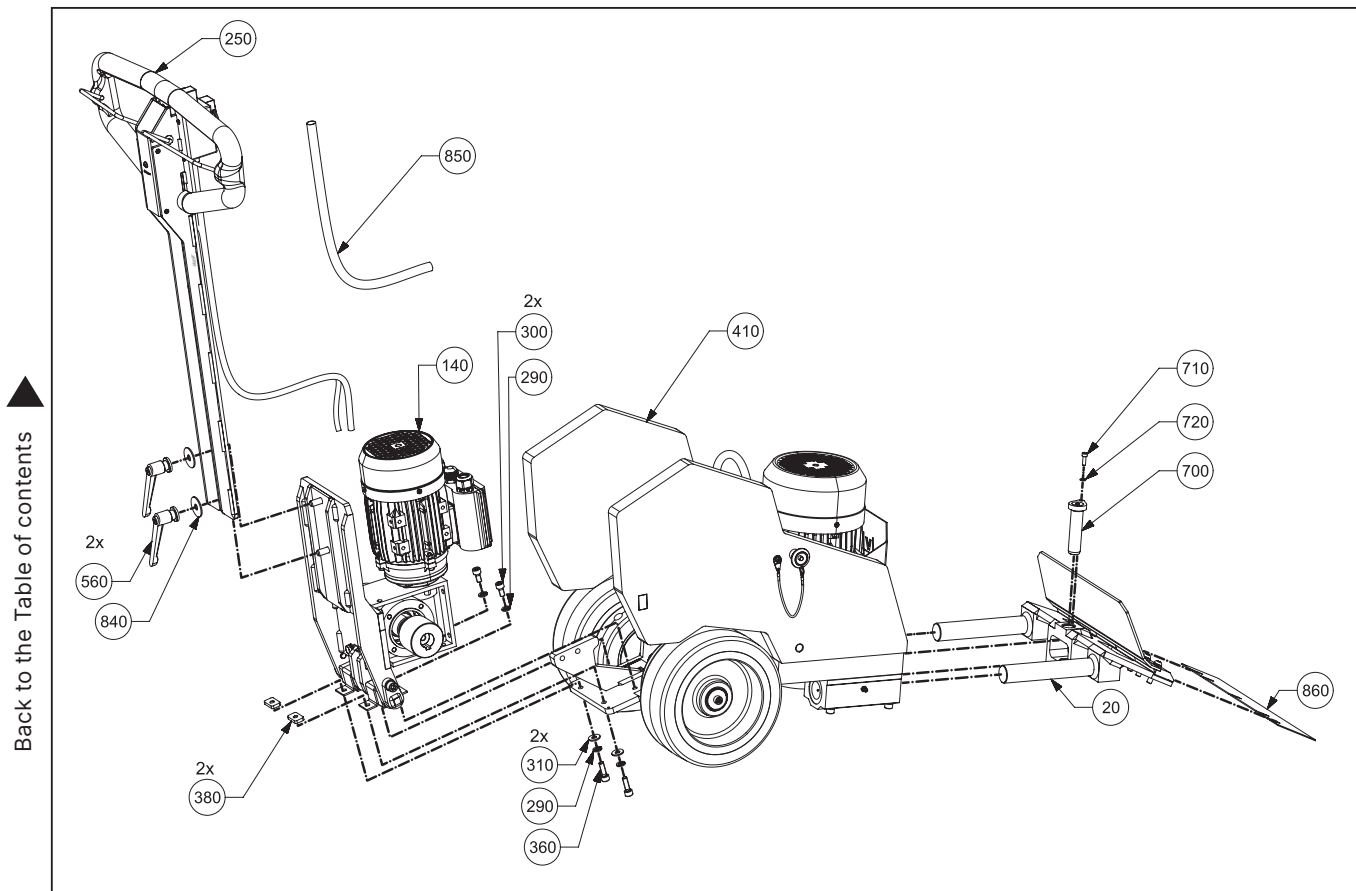
The Hire Supply Company Terms & Conditions Apply At All Time E&OE

LIST OF SPARE PARTS

! Only use original Von Arx EOOD spare parts or the replacement parts indicated in the parts list.

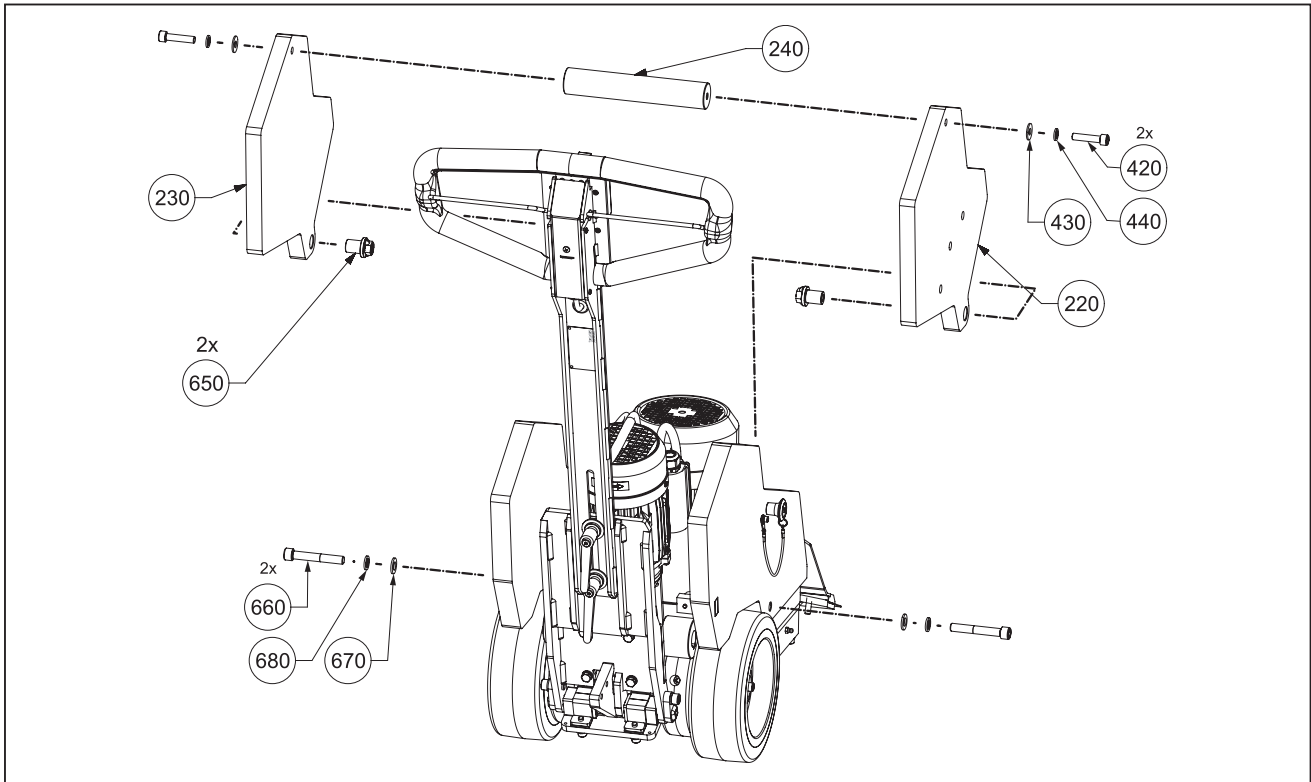
SC-35 floor scraper

Machine versions: **A) - 800077:** 230 V / 50 Hz, **B) - 800083:** 115 V / 50 Hz, **C) - 800084:** 230 V / 60 Hz



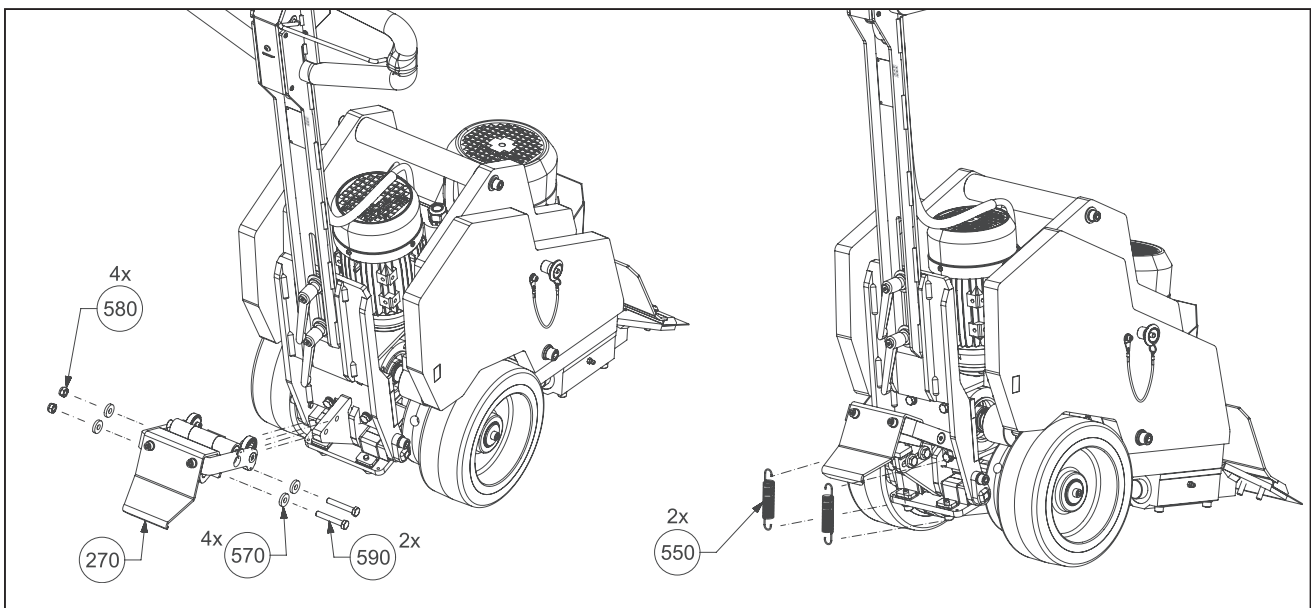
▲
Back to the Table of contents

No	Article	Part Name	Machine V.	No	Article	Part Name	Machine V.
20	400162	SLIDING SET		380	400099	PLATE	
140	400151	HANDLE SET	A	410	400159	CHASSIS	A
140	400506	HANDLE SET	B	410	400512	CHASSIS	B
140	400507	HANDLE SET	C	410	400513	CHASSIS	C
250	400083	HANDLE SET	A	560	300059	CLAMPING HANDLE	
250	400509	HANDLE SET	B	700	400129	PIN	
250	400514	HANDLE SET	C	710	100595	SCREW	
290	100618	WASHER		720	104727	WASHER	
290	100618	WASHER		840	108540	WASHER	
300	100286	SCREW		850	900450	CABLE WRAP	
310	300010	WASHER		860	400171	BLADE	
360	105923	SCREW					



No	Article	Part Name
220	400180	SIDE RIGHT
230	400179	SIDE LEFT
240	400181	HANDLE
420	300122	SCREW
430	300015	WASHER

No	Article	Part Name
440	104715	WASHER
650	400204	BUSHING
660	300121	SCREW
670	100129	WASHER
680	110537	WASHER



No	Article	Part Name
270	400089	LEVER
550	400122	SPRING
570	300086	WASHER

No	Article	Part Name
580	100263	NUT
590	109740	BOLT

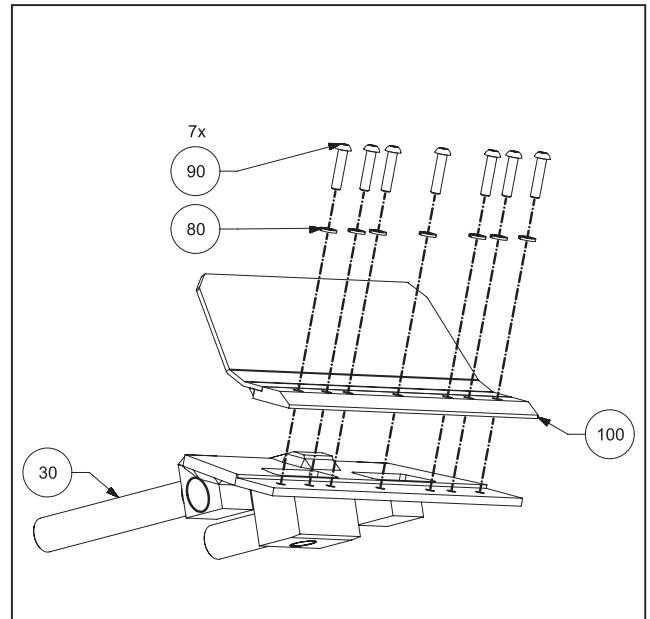
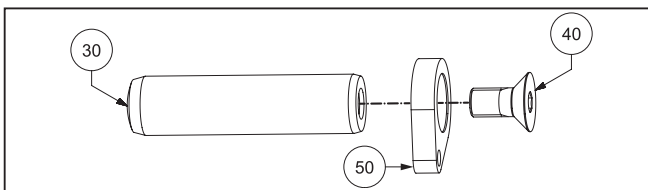
▲ Back to the Table of contents

Sliding set

No	Article	Part Name
30	400163	BLADE HOLDER
80	100618	WASHER
90	300178	SCREW
100	400182	BUFFER

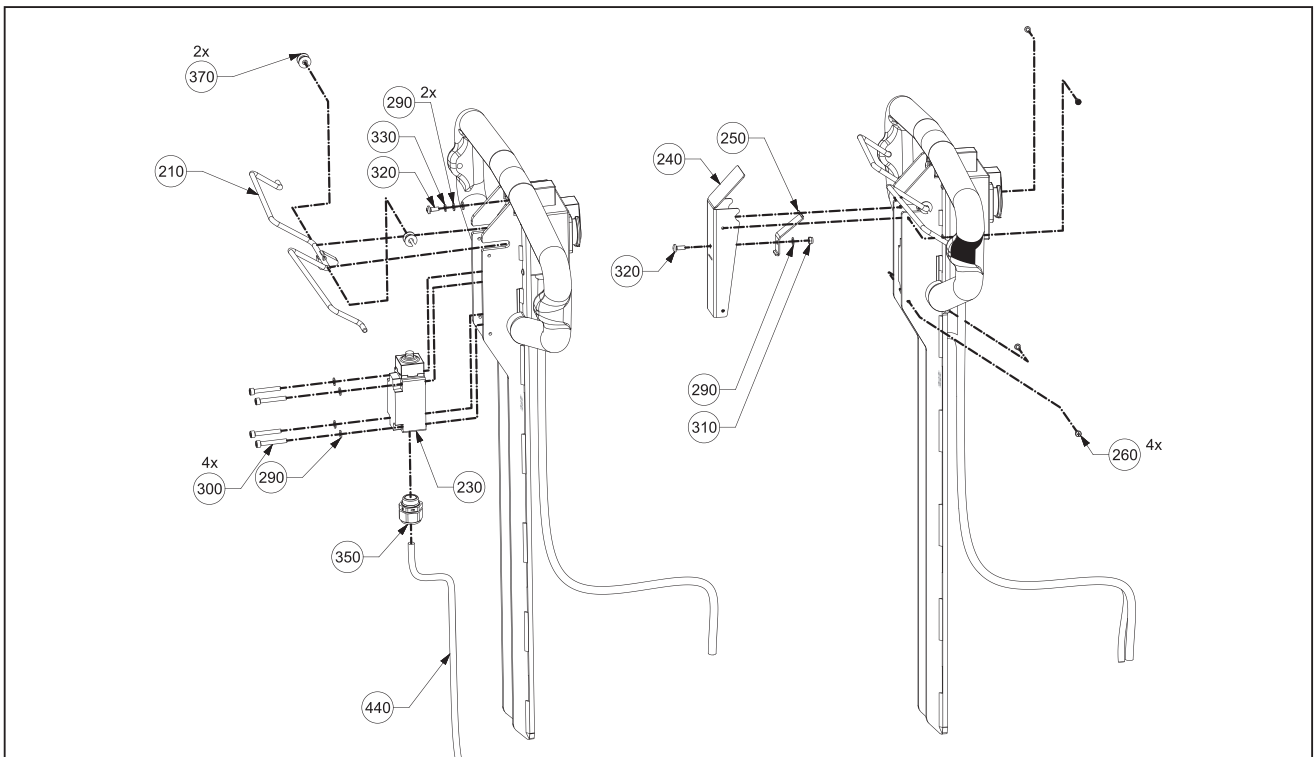
Pin - Sliding set - 400129

No	Article	Part Name
30	300105	PIN
40	300067	SCREW
50	400149	PLATE



Handle set top

Machine versions: **A) - 800077:** 230 V / 50 Hz, **B) - 800084:** 230 V / 60 Hz

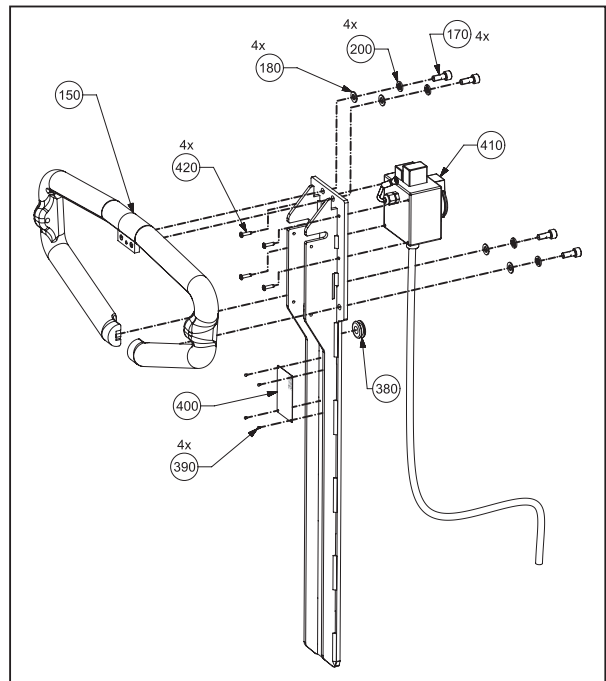


No	Article	Part Name
440	900402	CABLE
350	114813	CABLE GLAND
290	100609	WASHER
300	103562	SCREW
210	400199	LEVER

No	Article	Part Name
260	300094	SCREW
330	104727	WASHER
320	300085	SCREW
250	400148	SPRING
240	400147	COVER

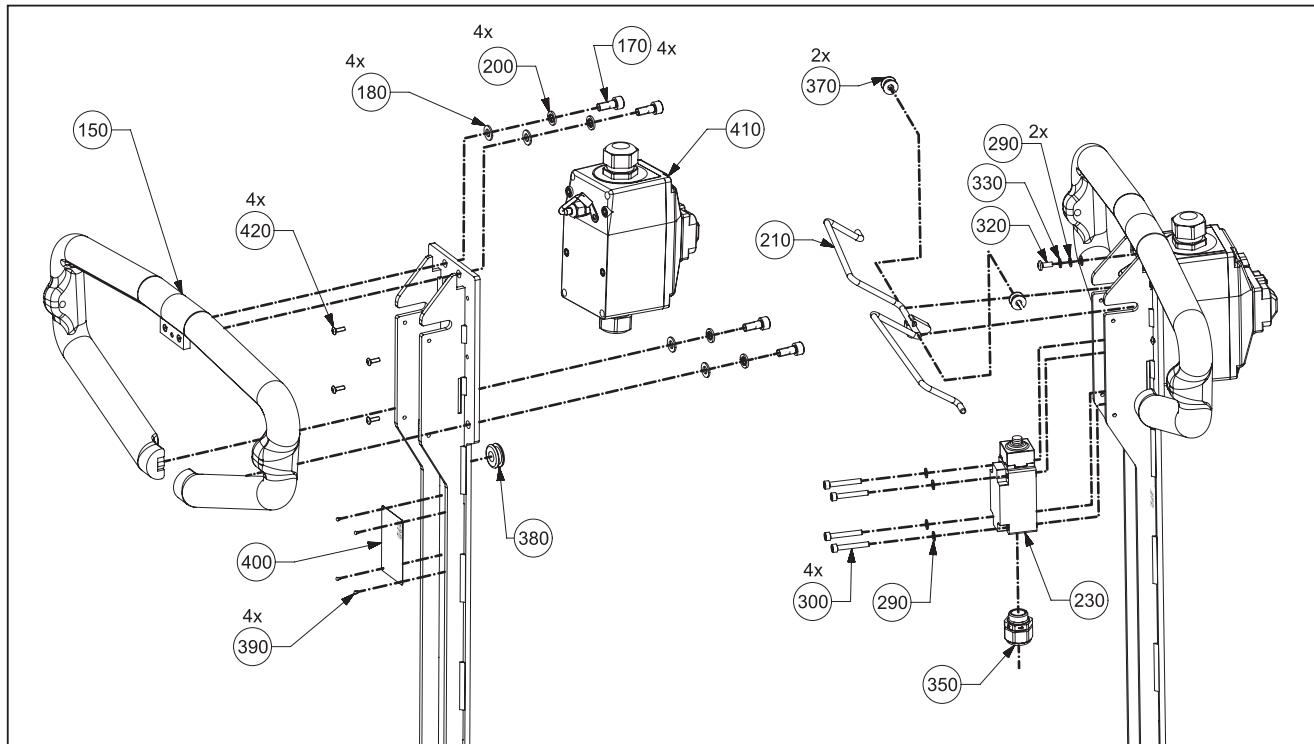
Back to the Table of contents ▲

No	Article	Part Name	Machine V.
150	400197	HANDLEBAR	
420	300083	SCREW	
180	101670	WASHER	
200	100618	WASHER	
170	300166	SCREW	
410	400270	SWITCH (800074)	A
410	400515	SWITCH (400514)	B
380	300164	OPEN GROMMET	
390	300165	SCREW	
400	400220	PLATE	



Handle set top

Machine version: **800083**: 115 V / 50 Hz

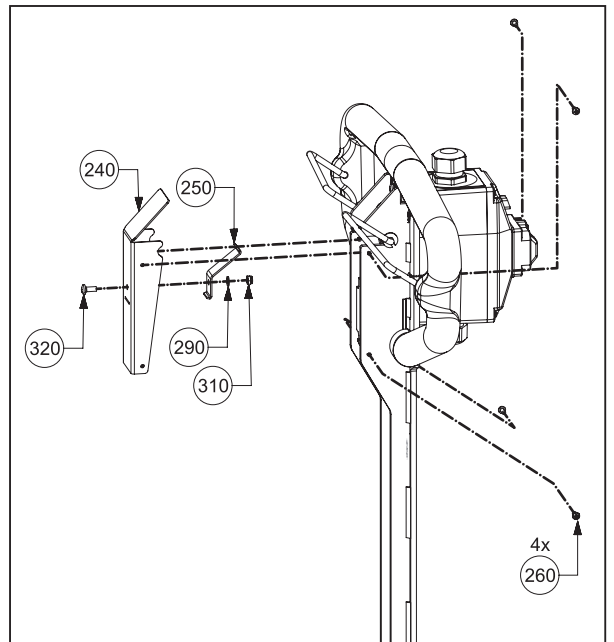


No	Article	Part Name
110	400131	HANDLE SET
150	400197	HANDLEBAR
170	100598	SREW
180	101670	WASHER
200	100618	WASHER
210	400199	LEVER
230	900402	SWITCH
300	103562	SCREW

No	Article	Part Name
330	104727	WASHER
350	114813	CABLE GLAND
370	400209	BUSHING
380	300164	OPEN GROMMET
390	300165	SCREW
400	703559	PLATE
410	400508	SWITCH (400509)
420	300084	SCREW



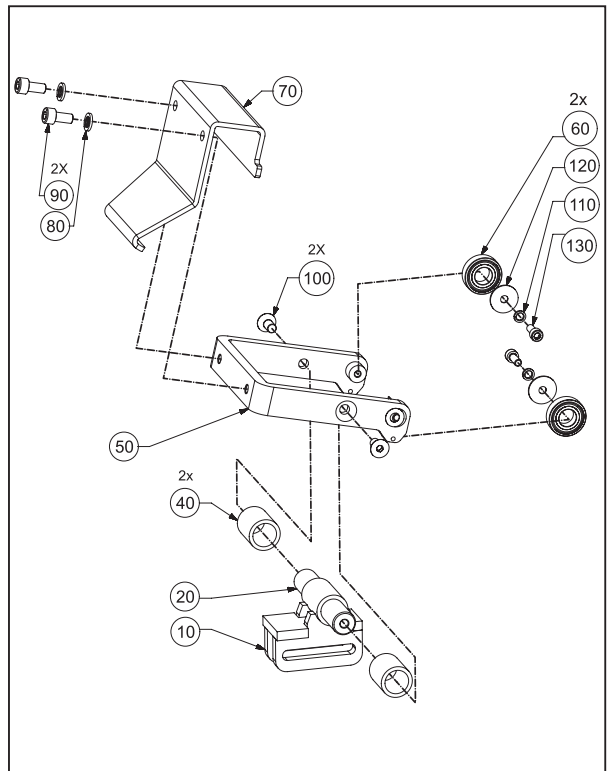
No	Article	Part Name
240	400147	COVER
250	400148	SPRING
260	300094	SCREW
290	100609	WASHER
310	106665	NUT
320	300085	SCREW



Lever -drive adjustment

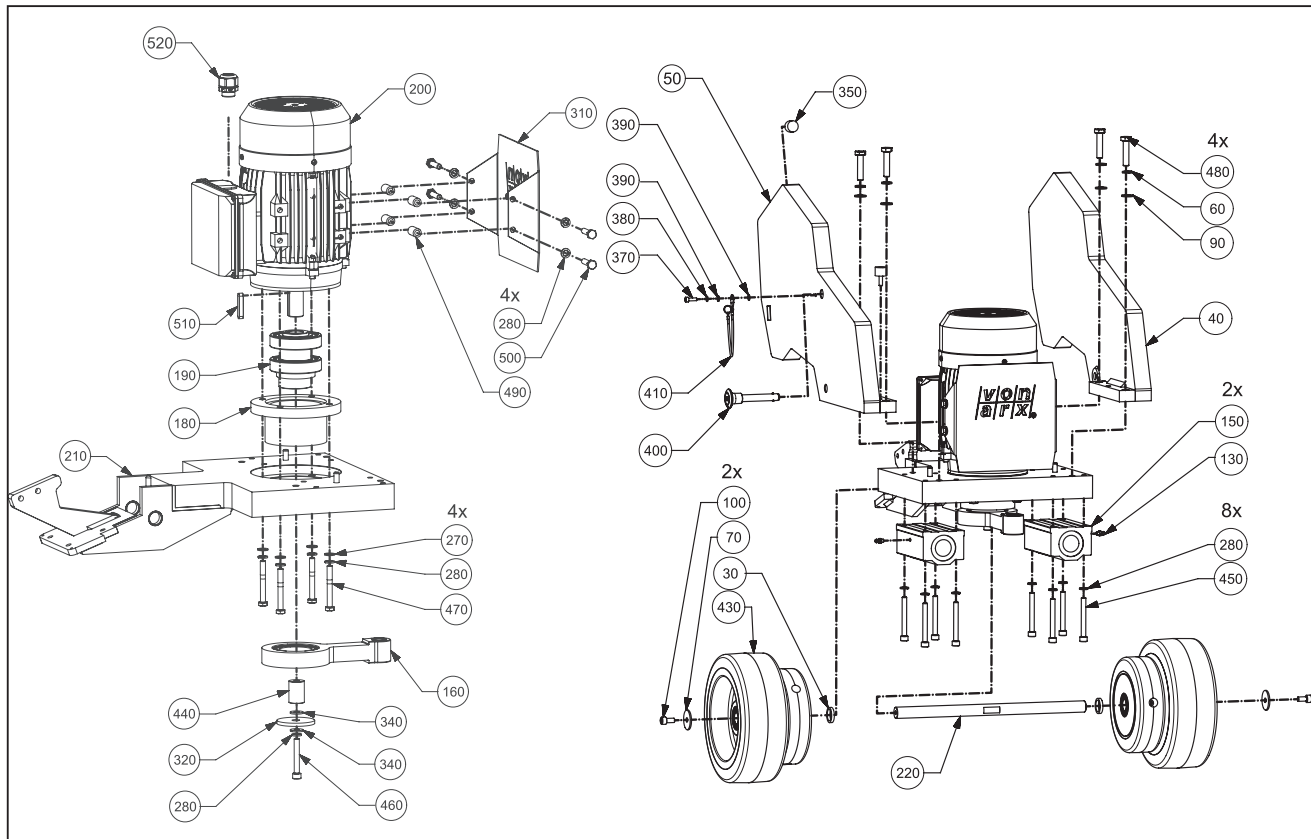
Back to the Table of contents

No	Article	Part Name
10	400086	BRACKET
20	400090	SHAFT
40	400092	SPACER
50	400094	LEVER
60	300042	BEARING
70	400100	PLATE
80	100618	WASHER
90	100286	SCREW
100	101669	SCREW
120	300103	WASHER
110	100302	WASHER
130	100301	SCREW



Chasis

Machine versions: **A) - 800077:** 230 V / 50 Hz, **B) - 800083:** 115 V / 50 Hz, **C) - 800084:** 230 V / 60 Hz

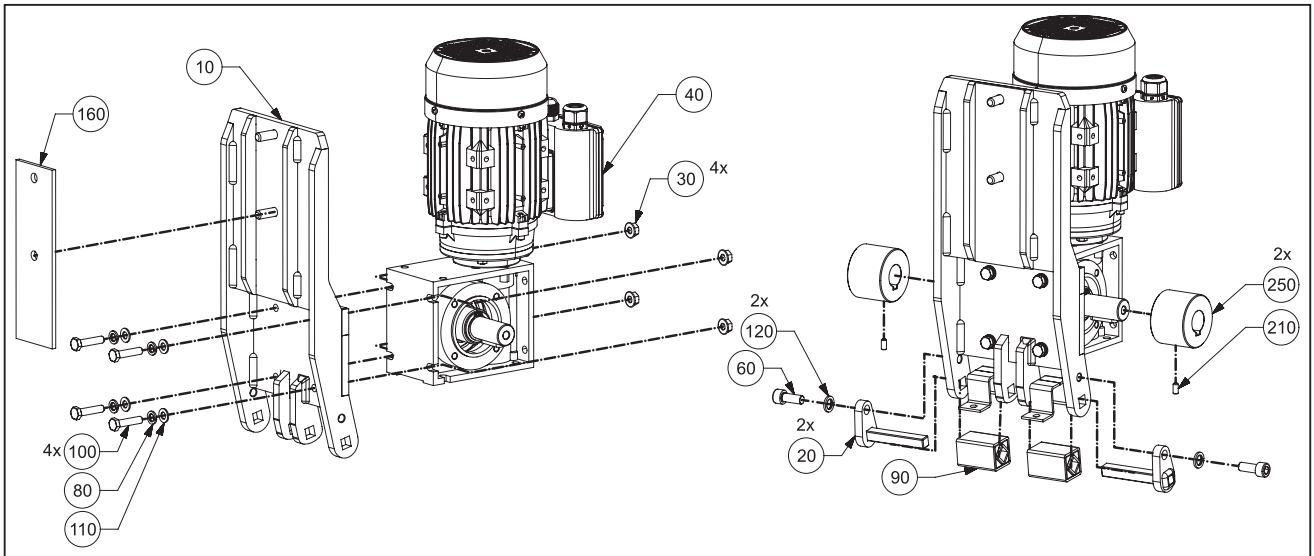


No	Article	Part Name	Machine V.	No	Article	Part Name
20	114813	CABLE GLAND		280	100618	WASHER
30	400190	SPACER		310	400184	SHIELD
40	400173	SIDE LEFT		320	400155	WASHER
50	400172	SIDE RIGHT		340	300010	WASHER
60	104715	WASHER		350	300107	RUBBER BUFFER
70	108540	WASHER		370	100595	SCREW
90	106300	WASHER		380	104727	WASHER
100	100286	SREW		390	100609	WASHER
130	300046	OIL NIPPLE		400	300108	LOCK PIN
150	300109	LINEAR BEARING		410	300099	RETAINING CABLE
160	400057	CRANK SET		430	400194	WHEEL
180	400186	INSERT		440	400201	SPACER
190	400167	ECCENTER		450	300116	SCREW
200	900307	ELECTRIC MOTOR BUSCK (400159) A		460	102281	SCREW
200	900435	ELECTRIC MOTOR BUSCK (400512) B		470	300118	BOLT
200	900627	ELECTRIC MOTOR BUSCK (400513) C		480	102359	BOLT
210	400202	BASE FRAME		490	400203	SPACER
220	400191	AXLE		500	106706	BOLT
270	101670	WASHER		510	108006	PARALLEL KEY

▲
Back to the Table of contents

Handle set-bottom

Machine versions: **A) - 800077:** 230 V / 50 Hz, **B) - 800083:** 115 V / 50 Hz, **C) - 800084:** 230 V / 60 Hz

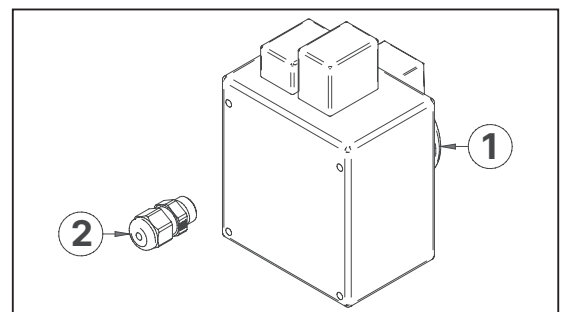


No	Article	Part Name	Machine V.	No	Article	Part Name	Machine V.
10	400071	HANDLE SET		20	400152	AXLE	
20	400152	AXLE		100	106706	BOLT	
30	300089	NUT		110	101670	WASHER	
40	400139	ELECTRIC MOTOR (400151)	A	120	104715	WASHER	
40	400504	ELECTRIC MOTOR (400506)	B	160	400124	ADAPTER	
40	400505	ELECTRIC MOTOR (400507)	C	210	300013	SET SCREW	
60	300006	SCREW		240	300043	BRACKET	
80	100618	WASHER		210	300013	SETSCREW	
90	300044	SUSPENSION					

Electric switch assembled

Machine versions: **A) - 800077:** 230 V / 50 Hz, **B) - 800084:** 230 V / 60 Hz

No	Article	Part Name	Machine V.
1	109373	SWITCH ASSEMBLED 230 V (400270)	A
1	900057	SWITCH ASSEMBLED 230 V (400515)	B
2	300071	SCREWED CABLE GLAND M12 PLAST	

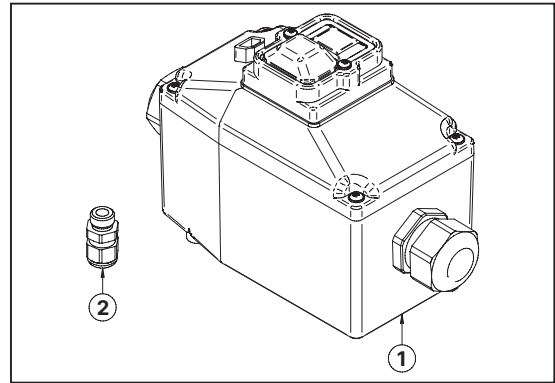


Back to the Table of contents

Electric switch assembled

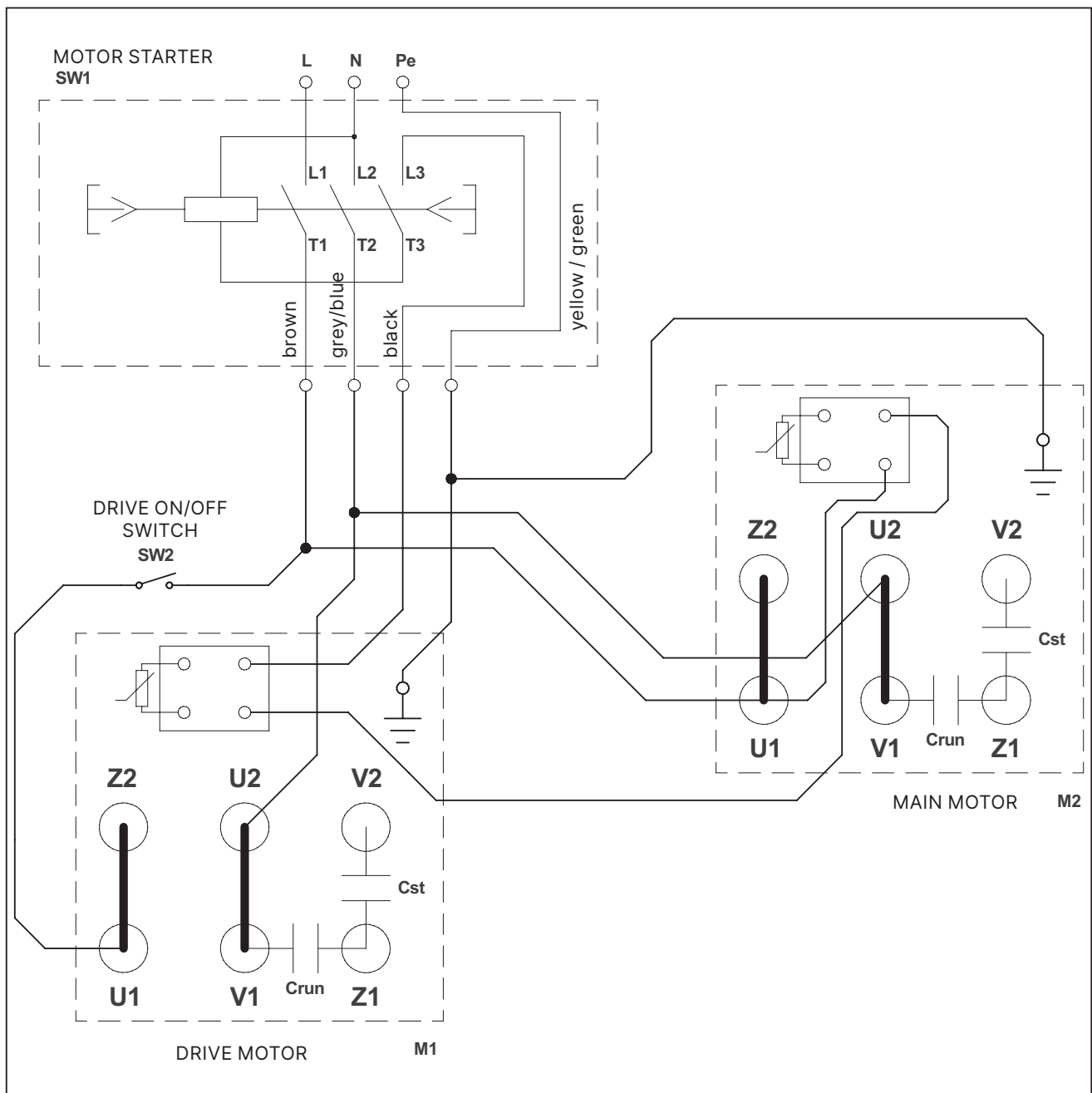
Machine version: **800083**: 115 V / 50 Hz

No	Article	Part Name
1	900282	SWITCH ASSEMBLED 115 V (400508)
2	300071	SCREWED CABLE GLAND M12 PLAST



Electrical scheme

Machine versions: **A) - 800077**: 230 V / 50 Hz, **B) - 800084**: 230 V / 60 Hz

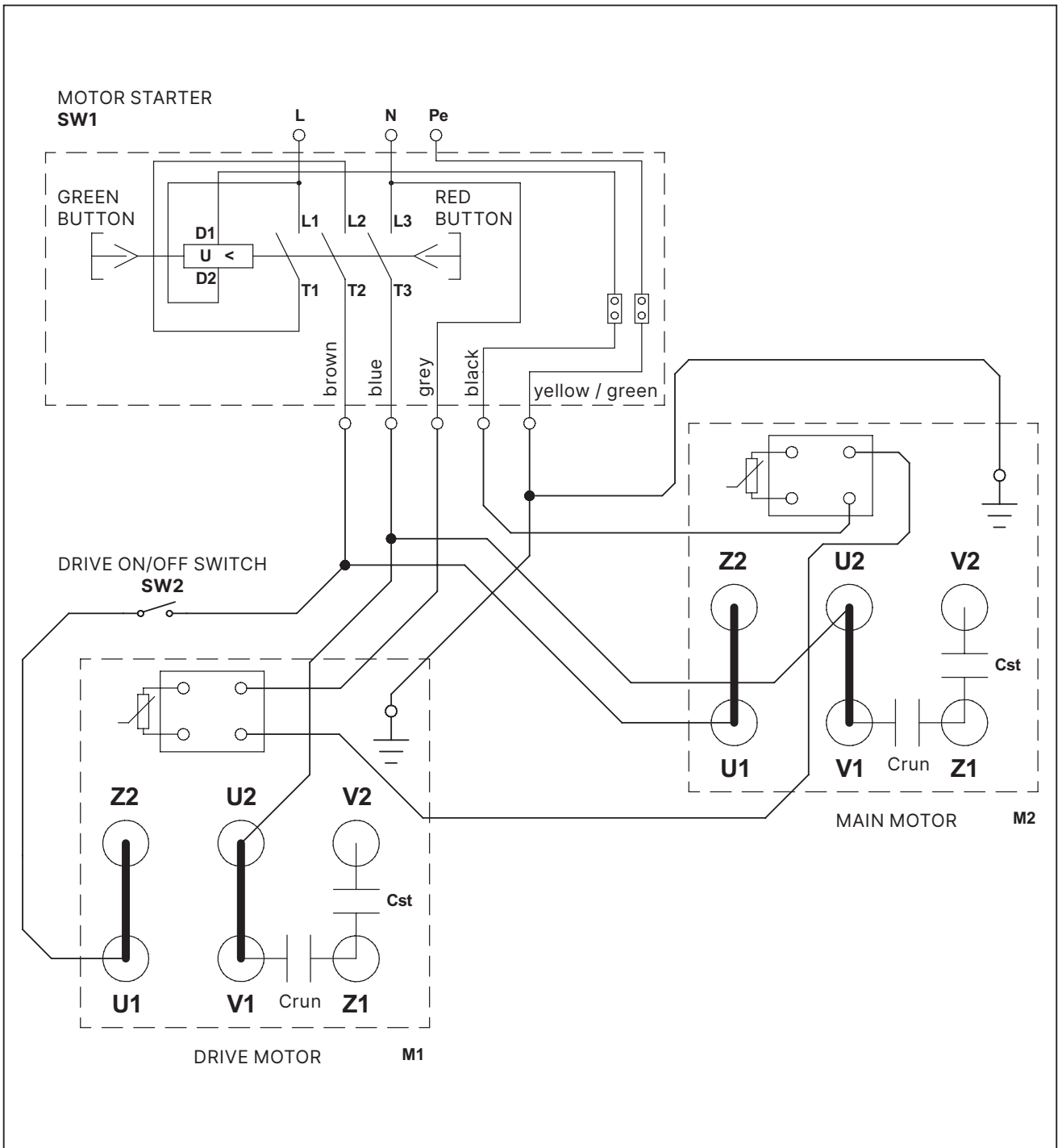


▲
Back to the Table of contents

Electrical scheme

Machine version: **800083**: 115 V / 50 Hz

▲
Back to the Table of contents





Recycling



ENVIRONMENTAL PROTECTION: Please recycle any unwanted materials as opposed to disposing them as general waste. It is recommended the original is retained and used to store the product when not in use for prolonged periods of time. If this is not applicable ensure the materials are sorted and recycled in accordance with local regulations.



SPECIFICATION CHANGE: It is our policy to continually improve products to ensure these meet the rigours of the industry we serve. Therefore, as such we reserve the right to alter specifications, data, components & parts with-out prior notice.

WARRANTY: Please refer to the manufactures terms & conditions.

IMPORTANT: No liability will be accepted for the incorrect use of this product.

KEEP THIS BOOKLET FOR FUTURE REFERENCE

📞 Nottingham: 0115 946 1988 • London: 0208 830 3333 ✉ Nottingham: sales@hscgroupuk.co.uk • London: sean@hscgroupuk.co.uk 🌐 www.hscgroupuk.co.uk

The Hire Supply Company Terms & Conditions Apply At All Time E&OE